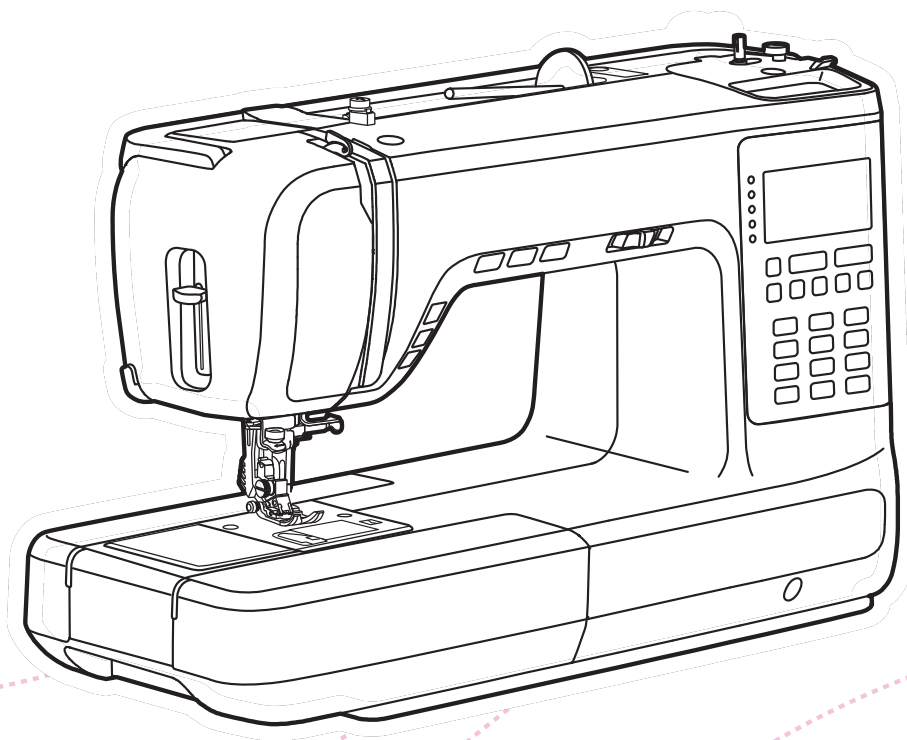


NECCHI

Instruction Manual

C400



NecchiAIO

Enjoy your Necchi time!



Important safety instructions

When using an electrical appliance, basic safety should always be followed, including the following:

Read all instructions before using this sewing machine.

DANGER - To reduce the risk of electric shock:

1. An appliance should never be left unattended when plugged in.
2. Always unplug this appliance from the electric outlet immediately after using and before cleaning.

WARNING - To reduce the risk of burns, fire, electric shock, or injury to persons:

1. Read the instruction carefully before you use the machine
2. Keep the instructions at a suitable place close to the machine and hand it over if you give the machine to a third party.
3. Use the machine only in dry locations.
4. Never leave the machine unattended with children or elderly people as they may not be able to estimate the risk.
5. This appliance can be used by children aged from 8 years and above and persons with reduced physical, sensory or mental capabilities or lack of experience and knowledge if they have been given supervision or instruction concerning use of the appliance in a safe way and understand the hazards involved.
6. Children shall not play with the appliance.
7. Cleaning and user maintenance shall not be made by children without supervision.
8. Always switch off the machine if you carry out preparation for work (change the needle, feed the yarn through the machine, change the footer, etc.).
9. Always unplug the machine if you leave it unattended, to avoid injury by expediently switch on the machine.
10. Always unplug the machine if you carry out maintenance (oiling, cleaning).
11. Don't use the machine if it's wet or in humid environment.
12. Never pull at the cord, always unplug the machine by gripping the plug.
13. If the LED lamp is damaged or broken, it must be replaced by the manufacturer or it's service agent or a similarly qualified person, in order to avoid a hazard.
14. Never place anything on the pedal.

15. Never use the machine if the air vents are blocked, keep the air vents of the machine and the foot pedal free from dust, fusel and leftovers.
16. The machine must only be used with designated foot controller, in order to avoid a hazard. If the foot controller is damaged or broken, it must be replaced by the manufacturer or its service agent or a similarly qualified person.
17. The sound pressure level at normal operation is smaller than 80dB(A).
18. Do not dispose of electrical appliances as unsorted municipal waste, use separate collection facilities.
19. Contact your local government for information regarding the collection systems available.
20. If electrical appliances are disposed of in landfills or dumps, hazardous substances can leak into the groundwater and get into the food chain, damaging your health and well-being.
21. When replacing old appliances with new ones, the retailer is legally obligated to take back your old appliance for disposal at least for free of charge.
22. The appliance is not to be used by persons (including children) with reduced physical, sensory or mental capabilities, or lack of experience and knowledge, unless they have been given supervision or instruction. (For outside Europe)
23. Children being supervised not to play with the appliance. (For outside Europe)

SAVE THESE INSTRUCTIONS

This sewing machine is intended for household use only.

Be sure to use the sewing machine in the temperature range from 5°C to 40°C. If the temperature is excessively low, the machine can fail to operate normally.

To carry the sewing machine, hold the carrying handle with your hand, and support the sewing machine with the other hand.

Contents

Machine Introduction

Principal parts of the machine	1
Front overview	1
Top overview	2
Back overview	2
Accessories	3
Standard	3
Optional	3
Using the accessory box	4
Connecting machine to power source	5
Polarized plug information	5
Foot control	5
Foot controller with needle up and down feature	5

Machine Setup

Sewing table	7
Free arm	7
Using the extension table	7
Two-step presser foot lifter	8
Using the knee lifter	8
Dual feed system (DFS)	9
To engage the DFS	9
To disengage the DFS	10
Fabric positioning	10
Using the thread net	11
Winding the bobbin	12
Inserting the bobbin	14
Threading the upper thread	15
Bringing up the bobbin thread	19
Replacing the needle	20
Matching needle/fabric/thread	21
Changing the presser foot	22
Remove the presser foot	22
Attach the presser foot	22
Remove and insert the presser foot holder	22
Insert the edge/quilting guide	22
Replacing the needle plate	23
To raise or drop the feed dogs	24

Instruction

LCD screen	26
Operation buttons	27
Combination buttons	34
Settings buttons	35
Selecting stitch	36
Combination mode	37
Combine stitches	37
Recalling and sewing the memorized stitches	38
Inserting stitches	39

Editing stitches	39
Clearing stitches	40
Repeat setting	40
Settings	41
Needle up/down setting	42
Pivot setting.....	43
Twin needle setting	44
Altering the thread tension.....	45
Balance adjustment.....	47
Hint sound	48
Presser foot pressure adjustment.....	49

Stitch Chart

Stitch chart	51
Direct Pattern Group	51
Regular Pattern Group	51
Alphabet Group-Block style	52
Alphabet Group-Script style	52
Alphabet Group-Script style	52

Sewing Basics

Starting to sew	54
Useful skills	56
Reverse sewing.....	56
Sewing curves.....	56
Sewing corners	57
Sewing stretch fabrics.....	57
Sewing thin fabrics.....	58
Sewing heavy fabric.....	58

Utility Stitches

Stretch stitch	60
Straight stretch stitch	60
Zigzag stretch stitch	60
Sewing stretch fabrics and elastic tape	61
Overcasting stitch.....	62
Using the all purpose foot	62
Using the overcasting foot	62
Blind Hem	63
Buttonhole stitch	64
Making a buttonhole on stretch fabrics.....	67
Bar tack stitch	69
Darning stitch.....	70
Eyelet stitch	72
Button sewing	73
Zipper insertion.....	74
Inserting a centered zipper	74
Inserting a side zipper.....	75
Satin stitch sewing	76
Gathering	77

Smocking	78
Free motion darning, embroidery and monogramming	79
Preparation for embroidering and monogramming	79
Darning	80
Embroidery	80
Monogramming	80
Free motion	81
Open toe foot	81
Quilting	82
Using the edge/quilting guide	82
Joining the pieces of the fabric	82
Patchwork stitching	83
Non-stick foot	83
Applique	84
Fagoting	84
Scallop stitch	85
Scallop edging	85
Scallop hem	85
Twin needle	86

Maintenance and Trouble Shooting

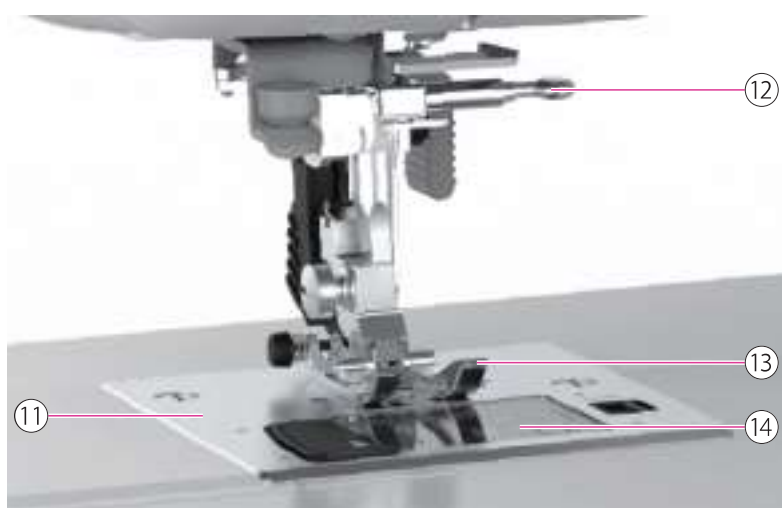
Maintenance	89
Clean the machine surface	89
Clean the hook	89
Warning Function	90
Warning beeping sound	90
Trouble shooting guide	91



Machine Introduction

Principal parts of the machine

Front overview



- ① Take-up lever
- ② Operation buttons
- ③ Automatic needle threader lever
- ④ Thread cutter
- ⑤ Sewing light
- ⑥ Sewing table and accessory box
- ⑦ Drop feed lever
- ⑧ Speed adjustment slider
- ⑨ LCD screen
- ⑩ Knee lifter slot
- ⑪ Needle plate
- ⑫ Needle clamp screw
- ⑬ Presser foot
- ⑭ Bobbin cover

Top overview



- ① Horizontal spool pin
- ② Upper thread guide
- ③ Bobbin thread guide

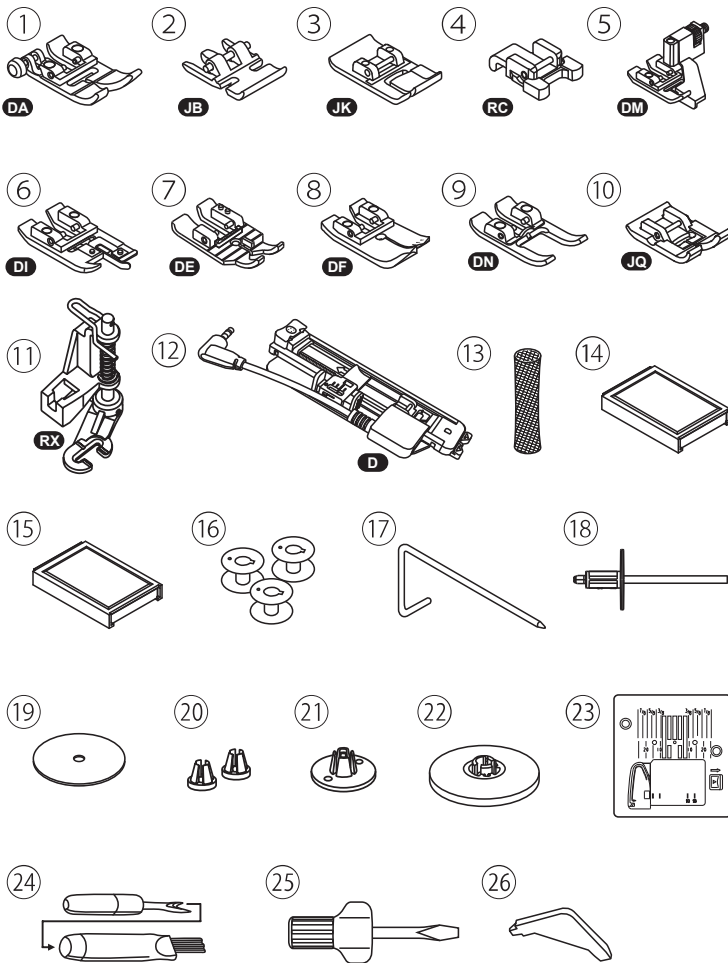
- ④ Second spool pin hole
- ⑤ Bobbin thread cutter
- ⑥ Magnet

Back overview



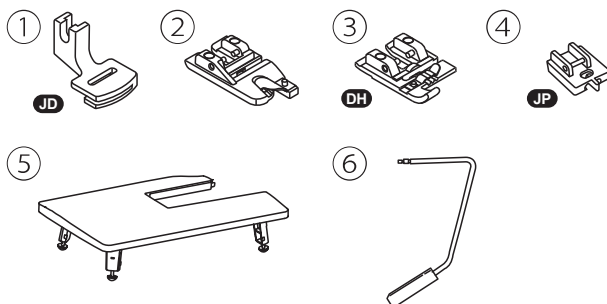
- ① Handwheel
- ② Main power switch
- ③ Foot control connector
- ④ Power cord socket
- ⑤ Handle
- ⑥ Electronic buttonhole foot socket
- ⑦ Dual-feed system (DFS)
- ⑧ Presser foot lifter

Accessories



Standard

- ① All purpose foot
- ② Zipper foot
- ③ Satin stitch foot
- ④ Button sewing foot
- ⑤ Blind hem foot
- ⑥ Overcasting foot
- ⑦ 1/4" Quilting foot
- ⑧ Straight stitch foot
- ⑨ Open toe foot
- ⑩ Non-stick foot
- ⑪ Darning/embroidery foot
- ⑫ Electronic buttonhole foot
- ⑬ Thread net
- ⑭ Needle set (#75/11*2, #90/14*3)
- ⑮ Twin needle (#80/12, 2.5mm)
- ⑯ Bobbin (3x)
- ⑰ Edge/quilting guide
- ⑱ Second spool pin
- ⑲ Spool pin felt
- ⑳ Spool holder (S)
- ㉑ Spool holder (M)
- ㉒ Spool holder (L)
- ㉓ Straight stitch needle plate
- ㉔ Seam ripper/brush
- ㉕ Screwdriver
- ㉖ L-screwdriver



Optional

- ① Gathering foot
- ② Hemmer foot
- ③ Cording foot
- ④ Invisible zipper foot
- ⑤ Extension table
- ⑥ Knee lifter

Using the accessory box



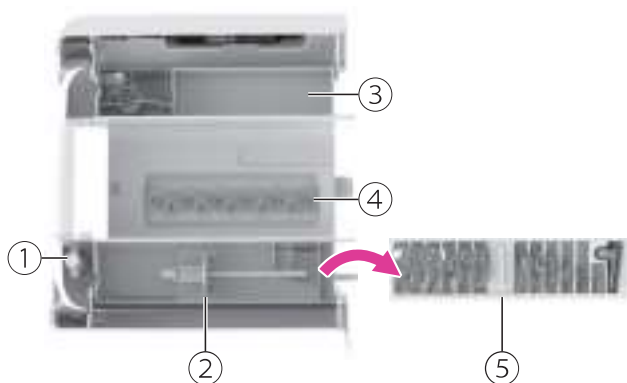
Hold the sewing table horizontally, then pull toward the left to remove it from the machine.

Attach the sewing table, and then push it to the right.



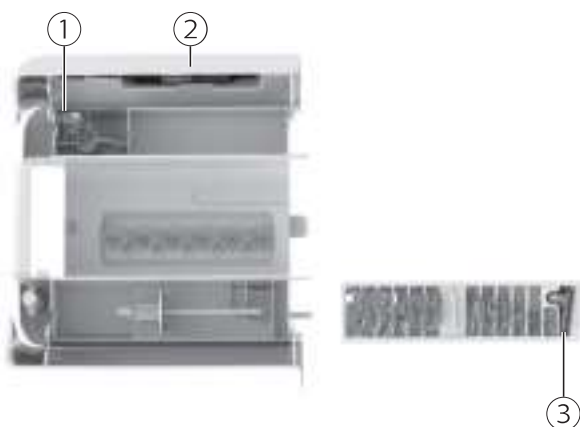
The inside space of the sewing table is used as an accessory box.

To store the accessories in the compartment of the sewing table, pull the top of the flat bed attachment to open the accessory compartment.



Individual compartment for specific purpose storage.

- ① Screwdriver storage space
- ② Second spool pin storage space
- ③ Additional storage space
- ④ Bobbin storage space
- ⑤ Presser foot storage trays

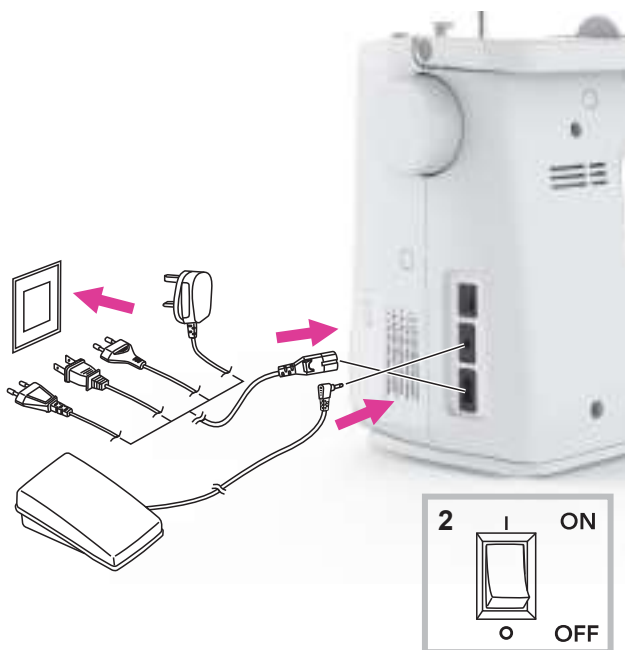


Specific presser foot can be stored in designated space.

- ① Darning/embroidery foot (RX)
- ② Electronic buttonhole foot
- ③ Blind hem foot (DM)

Other accessories can be also stored in the compartment in the presser foot storage trays.

Connecting machine to power source



⚠ Attention

Always make sure that the machine is unplugged from power source and the main switch is off ("O"), when the machine is not in use and before inserting or removing parts.

Before connecting the power supply, make sure that the voltage shown on the rating plate is conforming with your main power.

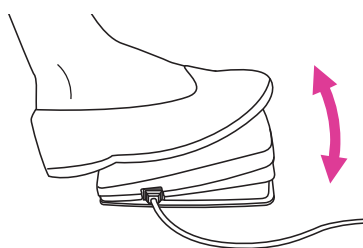
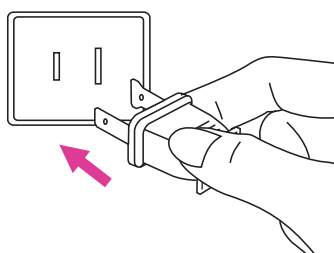
Put the machine on a stable table.

1. Connect the machine to a power source as illustrated.
2. Turn the power switch to on ("I").

The sewing lamp will light up when the switch is turned on.

Polarized plug information

This appliance has a polarized plug (one blade is wider than the other), to reduce the risk of electrical shock; this plug will fit in a polarized outlet only one way. If the plug does not fit fully in the outlet, reverse the plug. If it still does not fit, contact a qualified electrician to install the proper outlet. Do not modify the plug in any way.



Foot control

When the machine is off, insert the foot control plug into its connector on the machine.

Turn on the machine, and then slowly press down the foot control to start sewing. Release the foot control to stop the machine.

Foot controller with needle up and down feature

User can quickly press one step on the foot controller to change the needle position go up or down into the fabric.

Note

Consult a qualified electrician if in doubt as to connect the machine to the power source.



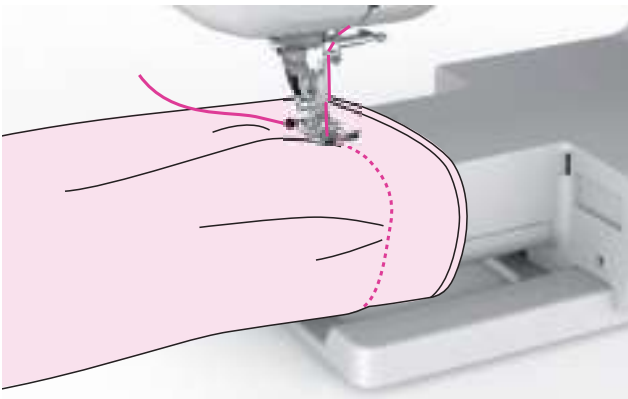
Machine Setup

Sewing table



Hold the sewing table horizontally, then pull toward the left to remove it from the machine.

Attach the sewing table, and then push it to the right.



Free arm

Free-arm sewing is convenient for sewing tubular areas such as pant hems and cuffs

Using the extension table



Pull the sewing table and accessory box off by sliding it to the left.

Follow the arrow, and stretch the foot of the extension table.



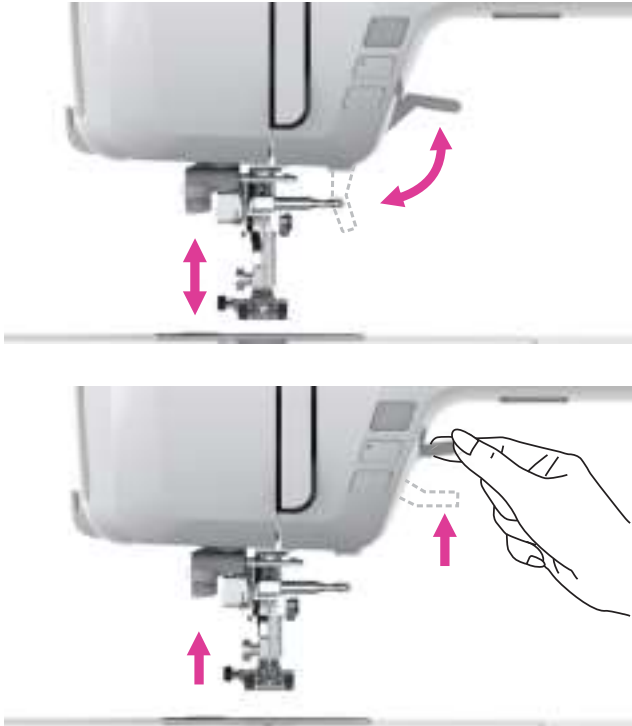
Snap (A) of the extension table into (B) of the machine.

Extension table can help moving during sewing.

Note

The needle must always be at the highest position.

Two-step presser foot lifter



The presser foot lifter is to raise or lower your presser foot.

When sewing multi-layers or thick fabrics, the presser foot can be further raised up manually to allow enough space for your sewing work.

Note

The needle must always be at the highest position.

Using the knee lifter



The knee lifter is extremely helpful when sewing applique, patchwork and quilting since it allows you to handle the fabric while your knee controls the presser foot.

Match the ribs on the knee lifter with the notches in the knee lifter socket and insert the knee lifter.

Adjust the sitting height so that the knee lifter can be operated with the knee.

Push the knee lifter with the knee to the right to raise the presser foot. Simultaneously the thread tension is released.

Release the knee lifter slowly to lower the presser foot.

⚠ Attention

Do not touch the knee lifter while sewing, otherwise the fabric will not be fed correctly.

Dual feed system (DFS)

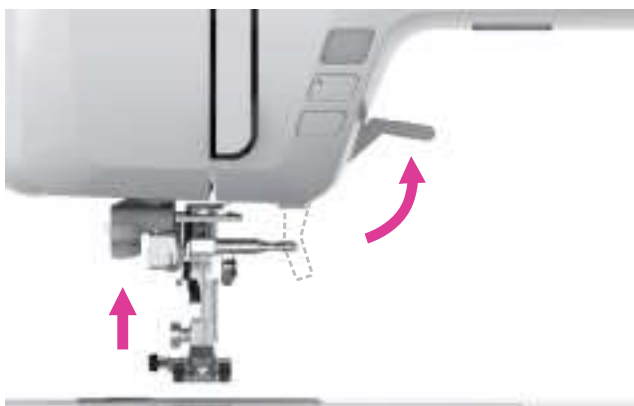
The DFS system feeds fabric from the top and bottom simultaneously to ensure matching of checked, striped or plaid fabrics. When sewing light or difficult materials such as silk or rayon fabrics, the DFS system prevents seam puckering.



⚠ Attention

For all work with the DFS, use presser feet with the center back cut-out.

① Center back cut-out



To engage the DFS

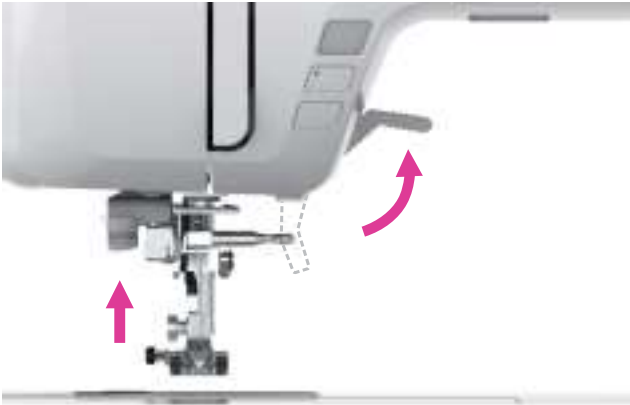
Raise the presser foot lifter.



Lower the DFS mechanism slowly.



Swing the DFS mechanism forward under the back of the presser foot until it is engaged and stays in the lowered position.



To disengage the DFS

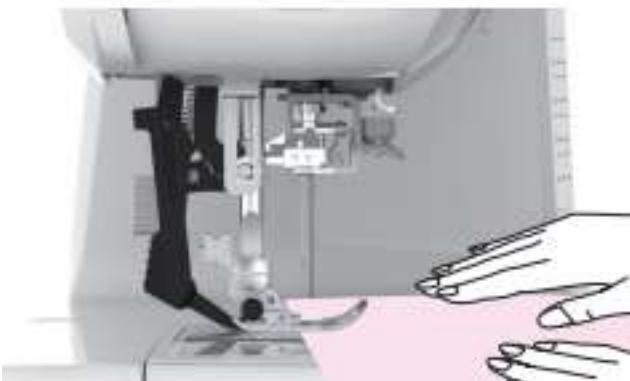
Raise the presser foot lifter.



Pull down the DFS mechanism and swing it to the rear to disengage.



Push the DFS mechanism up.



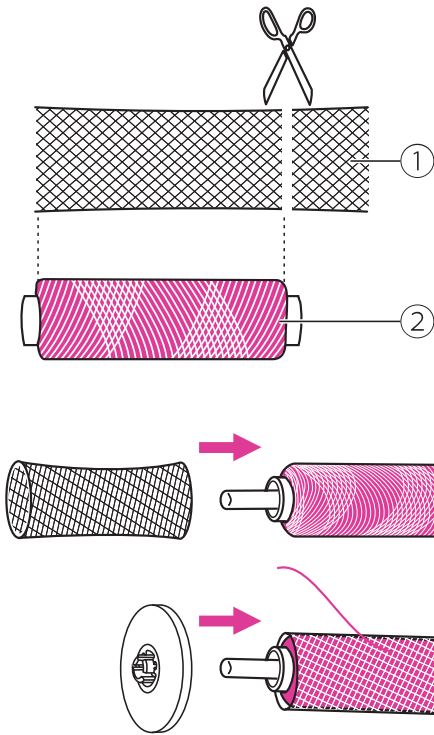
Fabric positioning

Place fabric flat on top of needle plate and position the fabric under presser foot.

While holding the thread tails with left hand turn handwheel with right hand to insert the needle into the fabric. Lower the presser foot and make 3-4 stitches.

Place hands on each side of the presser foot and gently guide the fabric while sewing.

Using the thread net



Note

- In order to prevent tangling of the thread, please use a thread net. The net is especially useful when using large or loose wound spools.
- Reduce the thread tension if necessary.

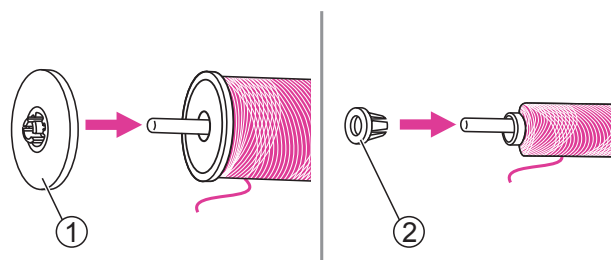
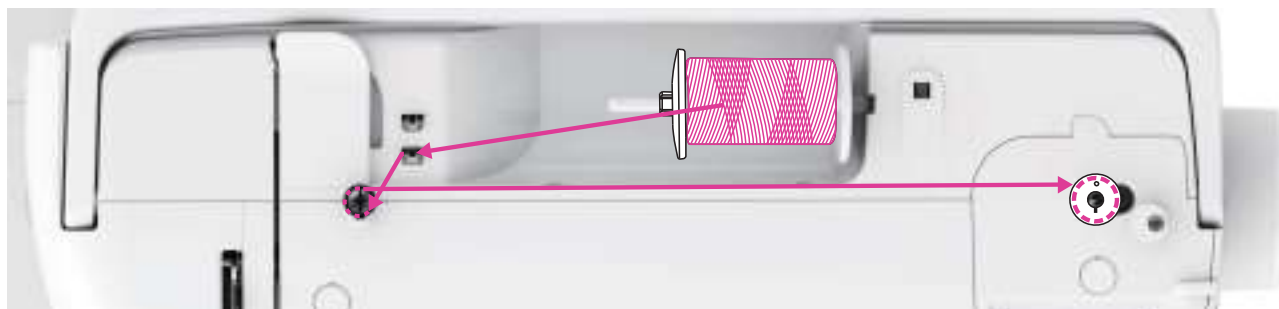
When using special threads which spin quickly off the thread spool, attach a net to the spool before using.

If the net is too long, cut the thread net to match the size of the spool.

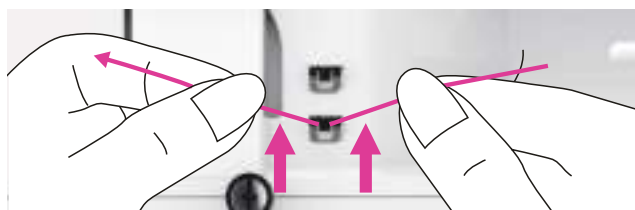
- ① Thread net
- ② Thread

Winding the bobbin

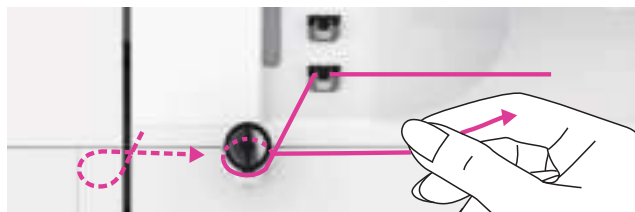
It is important to carry out the threading correctly to get a quality sewing. Otherwise several problems will occur.



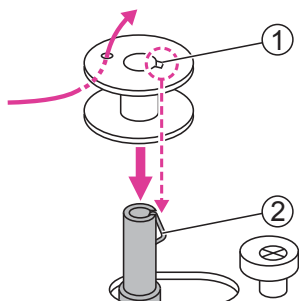
1. Place the thread and spool holder onto the spool pin. For better sewing quality, choose a proper size of the spool holder for the thread and attach it next to the spool.
 - ① Large spool holder
 - ② Small spool holder



2. Draw the thread from the spool and place the thread in between the bobbin thread guide.



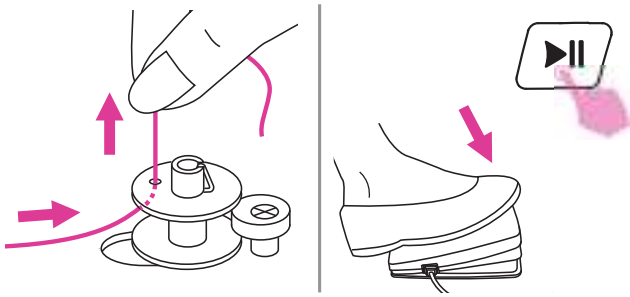
3. Wind the thread clockwise around the tension discs.



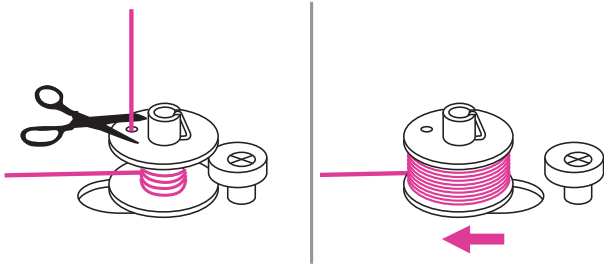
4. Place the thread end through one of the inner holes as illustrated and place the empty bobbin on the bobbin winder spindle. Then align the notch with bobbin winder spindle spring.
 - ① Notch
 - ② Bobbin winder spindle spring



5. Push the bobbin to the right. When the bobbin winder spindle is pushed to the right, the screen will display the figure.



6. Hold the thread tail securely in one hand. Step on the foot control or press the start/stop button to start winding the bobbin.



7. After the bobbin has wound a few rounds, stop the machine and cut the thread near the hole of the bobbin. Continue filling the bobbin until it is full. Once the bobbin is full, it rotates slowly. Release the foot control or press the start/stop button to stop the machine, then push the bobbin winder spindle to the left.

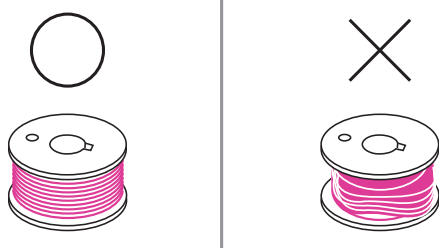


8. Remove the bobbin then use the thread cutter on the right side to cut.

① Thread cutter

Note

When the bobbin winder spindle is pushed to the right position, it's in "bobbin winding" mode and the machine is not allowed to sew and the handwheel will not be able to turn. To start sewing, push the bobbin winder spindle back to the left.



Note

Use a bobbin that has been correctly wound with thread, otherwise the needle may break or the thread tension will be incorrect.

Inserting the bobbin

⚠ Attention

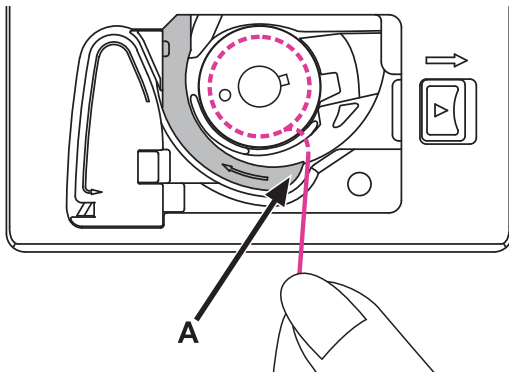
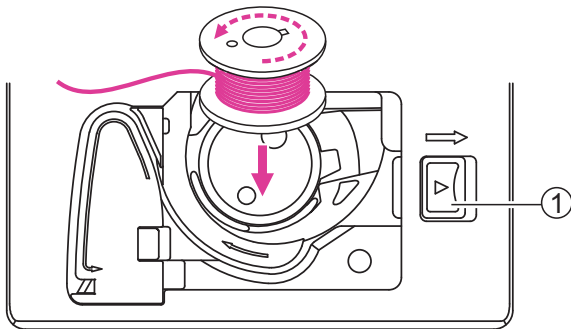
Turn the power switch to off ("O").

When inserting or removing the bobbin, the needle and the presser foot must be fully raised.

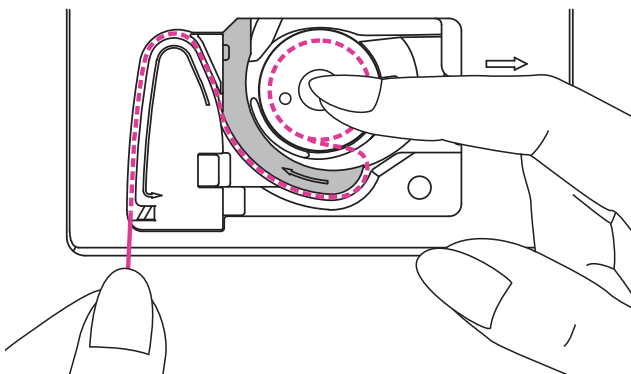
Open the bobbin cover by pushing the release button to the right.

① Release button

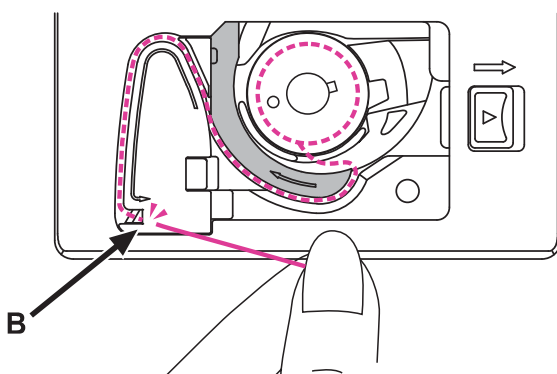
Insert the bobbin in the bobbin case with the thread running in a counter-clockwise direction (arrow).



Pull the thread through the slit (A).



With a finger hold gently on top of the bobbin, please follow the arrow markings and draw the thread into the bobbin thread guide.

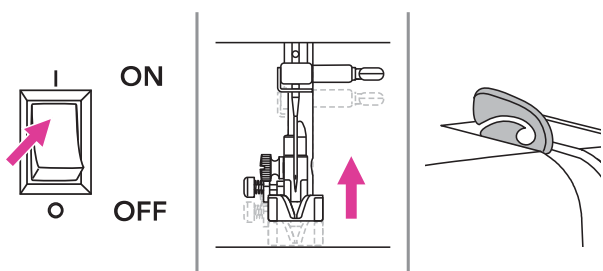


To cut off excessive thread, pull it to the cutter at point (B).

Close the bobbin cover.

Threading the upper thread

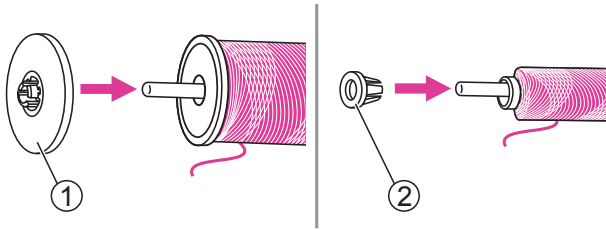
It is important to carry out the threading correctly to get a quality sewing. Otherwise several problems will occur.



⚠ Attention

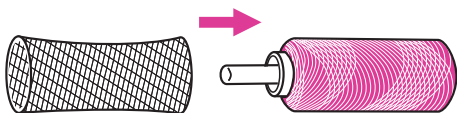
The needle threader can be with a 75/11 through 100/16 home sewing machine needle.

1. Turn the power switch to on ("I"), the needle, presser foot and take-up lever will automatically raise to the highest position.

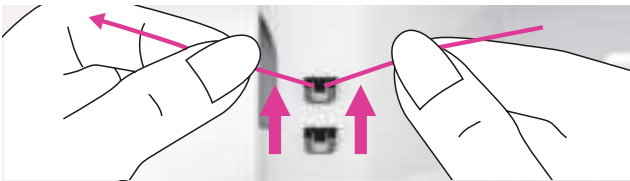


2. Place the thread and spool holder onto the spool pin. For better sewing quality, choose a proper size of the spool holder for the thread and attach it next to the thread.

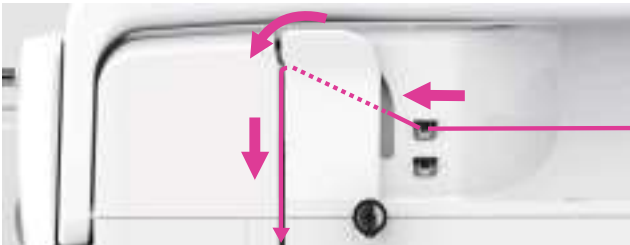
- ① Large spool holder
- ② Small spool holder



In order to prevent tangling of the thread, please use a spool net. The net is especially useful to work from large or loose wound spools.



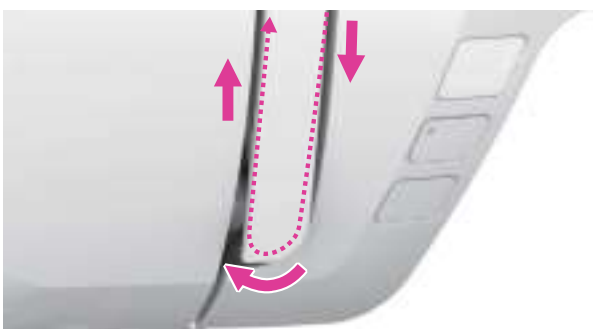
3. Draw the thread from the spool and place the thread in between the upper thread guide.



4. Guide the thread ahead and pull the thread through the pre-tension spring as illustrated.



5. Continue to guide the thread into the silver discs to keep the thread in proper tension.



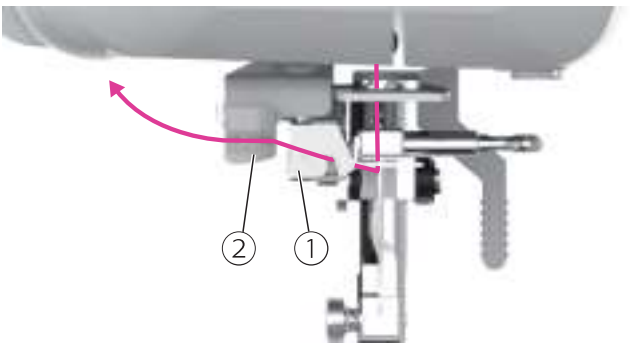
6. Pass the thread under the take-up spring then pull it upwards as arrow marks illustrated.



7. Pull the thread to the top then pass the thread through the slotted eye of the take-up lever. Guide the thread down afterwards.



8. Pass the thread behind the flat, horizontal thread guide. Threading to the right side of the thread guide.



9. Pull the thread to the left, pass through the guide plate from back to the front and then through the thread guide disk.

- ① Guide plate
- ② Thread guide disk

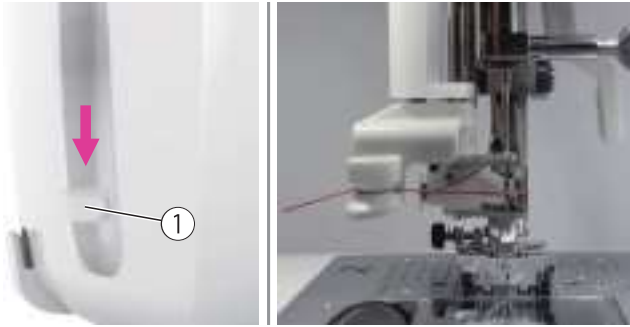
Note

Please make sure the thread is actually pass through the guide plate and thread guide disk, or it might cause thread cannot threading the needle eye successfully.



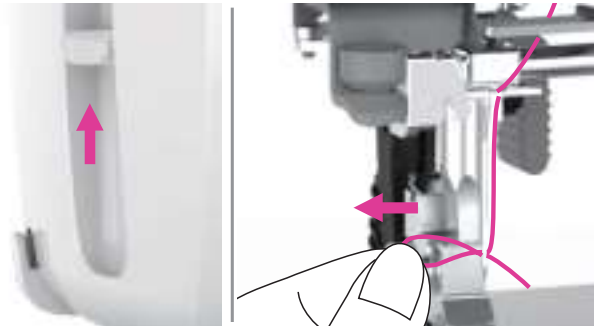
10. Guide the threads to the side of the face plate and into the thread cutter to cut them.

- ① Thread cutter



11. Press down the automatic needle threader lever on the left side of face cover to the bottom, when you hear a "click" sound, it is the correct position and the hook pin passes through the needle eye.

① Lever



12. Raise the lever, the hook will rotate and pass the thread through the needle eye to form a loop.

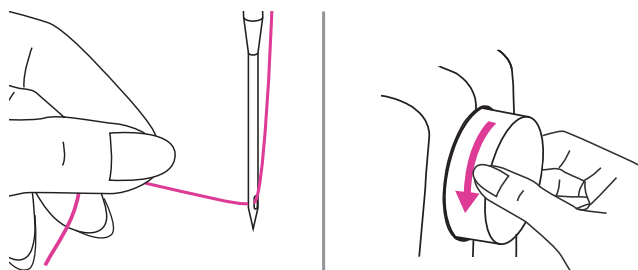
Pull the thread through the needle eye to finish threading.

Note

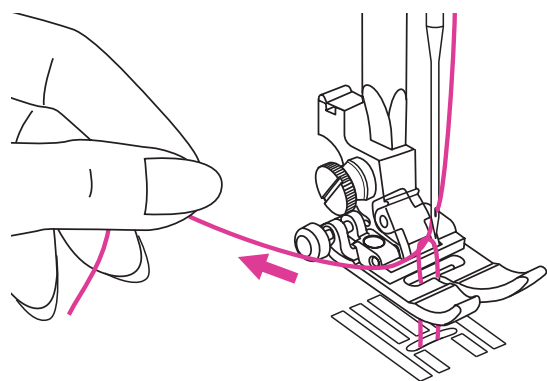
Your machine is threaded and ready for sewing, follow the instructions on "Starting to sew" chapter to start sewing.

Bringing up the bobbin thread

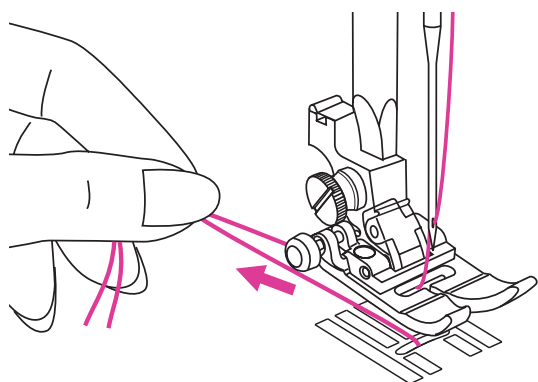
When sewing gathering or smocking stitch, bring up the bobbin thread first as below instruction.



Hold the upper thread with your left hand. Turn the handwheel towards you (counter-clockwise) to lower the needle down below the needle plate then raise it to bring the bobbin thread up.



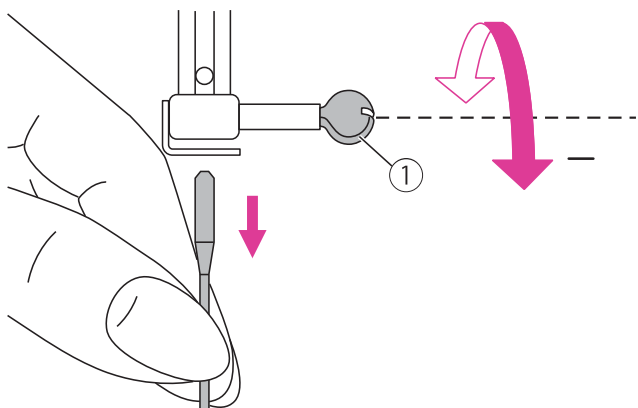
Gently pull on the upper thread to bring the bobbin thread up through the needle plate hole. The bobbin thread will come up in a loop.



Pull both threads to the back under the presser foot.

Replacing the needle

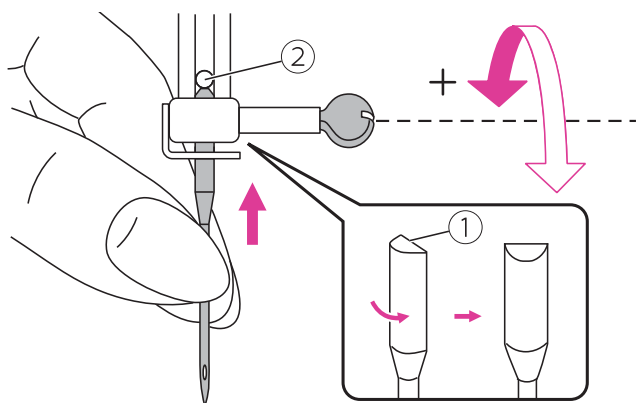
Change the needle regularly, especially when it shows signs of wear or if it causes problems.



⚠ Attention
Turn the power switch to off ("O") when carrying out below operations!

Turn the handwheel toward you to raise the needle then loosen the needle clamp screw to remove the needle.

① Needle clamp screw

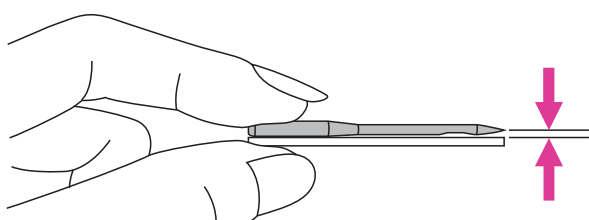


When inserting a new needle, keep the flat side of the shaft to the back.

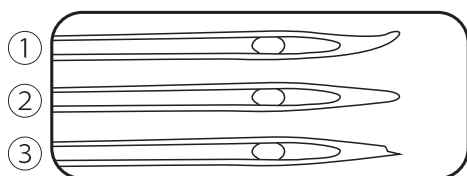
Push the needle into the clamp until it touches the pin and stops. Then secure it by tightening the needle clamp screw.

① Flat side of the shaft

② Pin



Needles must be in perfect condition.







Problems can occur with:

① Bent needles

② Blunt needles

③ Damaged points

Matching needle/fabric/thread

FABRICS	THREAD	NEEDLE SIZE
Lightweight fabrics- thin cottons, voile, serge, silk, muslin, Qiana, interlocks, cotton knits, tricot, jerseys, crepes, woven polyester, shirt & blouse fabrics.	Light-duty thread in cotton, nylon, polyester or cotton wrapped polyester.	75/11 
Medium weight fabrics- cotton, satin, kettleclote, sailcloth, double knits, lightweight woolens.	Most threads sold are medium size and suitable for these fabrics and needle sizes.	80/12 
Medium weight fabrics- cotton duck, woolen, heavier knits, terrycloth, denims.	Use polyester threads on synthetic materials and cotton on natural woven fabrics for best results.	90/14 
Heavyweight fabrics- canvas, woolens, outdoor tent and quilted fabrics, denims, upholstery material (light to medium).	Always use the same thread on top and bottom.	100/16 

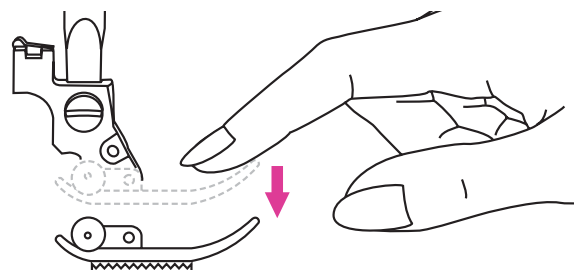
Note

- In general, fine threads and needles are used for sewing fine fabrics, thicker threads and needles are used for sewing heavy fabrics.
- Always test thread and needle size on a small piece of fabric which will be used for actual sewing.
- Use the same thread for needle and bobbin.
- Use a stabilizer or place a backing for fine or stretchy fabrics, and select the correct presser foot.
- It is recommended that a 90/14 needle should be used when embroidering on heavyweight fabrics or stabilizing products (for example, denim, puffy foam, etc.). A 75/11 needle may bend or break, which could result in injury.
- For transparent nylon thread, always use needle 90/14 - 100/16. The same thread is usually used for the bobbin thread and upper threading.

Changing the presser foot

⚠ Attention

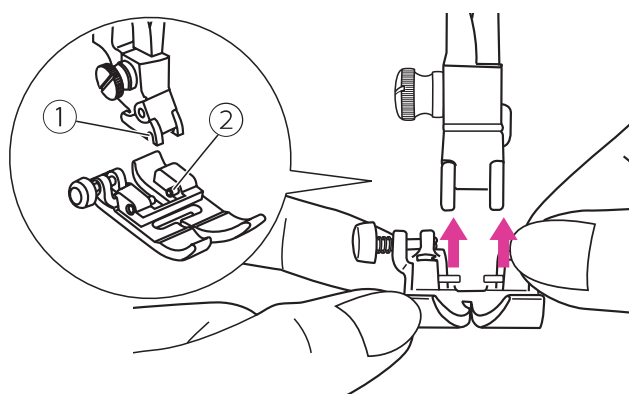
- Turn the power switch to off ("O").
- Always use the proper foot for the selected stitch. The wrong foot can cause the needle to break.



Remove the presser foot

Raise the presser foot lifter.

Press down on the front of the presser foot sole by hand.



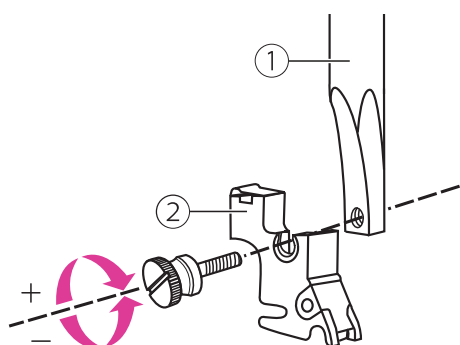
Attach the presser foot

Raise the presser foot lifter.

Place the presser foot under the shaft groove so that the shaft groove is above the presser foot sole pin.

Then push the new presser foot sole upward until it engages.

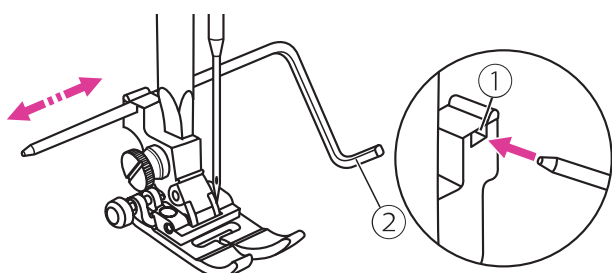
- ① Shaft groove
- ② Pin



Remove and insert the presser foot holder

Raise the presser foot lifter. Align the presser foot holder with the lower left side of the presser bar. Hold the presser foot holder, then tighten the screw using the enclosed screwdriver.

- ① Presser foot bar
- ② Presser foot holder

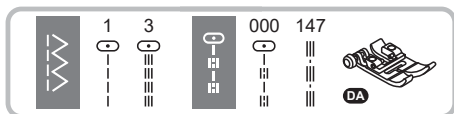


Insert the edge/quilting guide

Insert the edge/quilting guide in the slot as illustrated. Adjust the needed width according to your sewing applications.

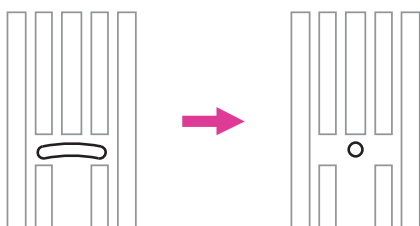
- ① Slot
- ② Edge/quilting guide

Replacing the needle plate



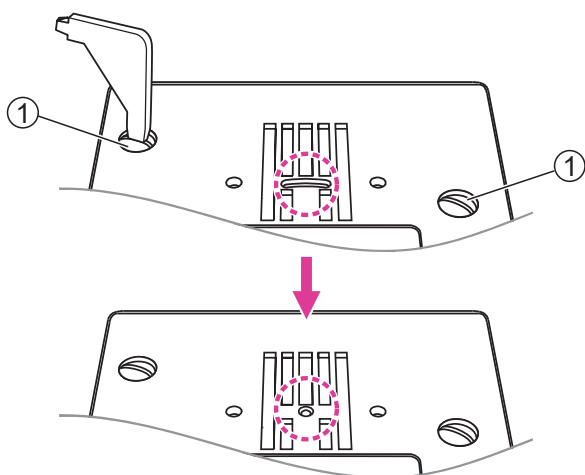
⚠ Attention

- Turn the power switch to off ("O").
- Only specific stitches are applicable while using straight stitch needle plate, including the Direct Pattern Group number 1 and 3, Regular Pattern Group number 000 and 147.



The particular design of smaller central hole can give a better support of the fabric during straight stitch sewing.

Thus, the fabric can be prevented from being pulled down into bobbin/hook area, especially in the beginning or end of a seam.



Remove the needle, presser foot and presser foot holder.

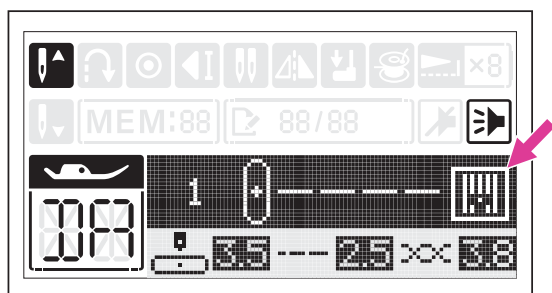
Remove the screws on the needle plate then remove the needle plate.

① Screws

Change the straight stitch plate and tighten the screws.



When a warning message appears on the screen, click the confirm icon. The LCD screen will display the straight stitch plate icon.



Note

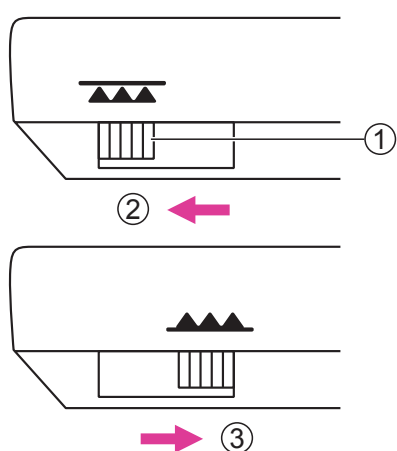
If a stitch outside Direct Pattern Group number 1 or 3, or Regular Pattern Group number 000 or 147 is selected, the machine will automatically set to stitch number 1 in Direct Pattern Group.

To raise or drop the feed dogs



The drop feed lever can be seen on the base at the front side of the sewing machine, when the sewing table is opened.

Sliding the drop feed lever to lower or raise the feed dogs. When lever is in raised position, the feed dog will arise automatically when you are sewing.



- ① Drop feed lever
- ② Lowered position
- ③ Raised position

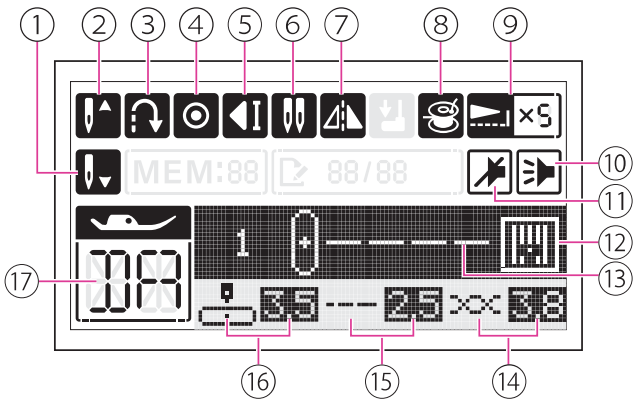
Note

When you finish the work, (e.g. button sewing, free motion darning, embroidery and monogramming), please move the drop feed lever to raised position for general sewing purpose.



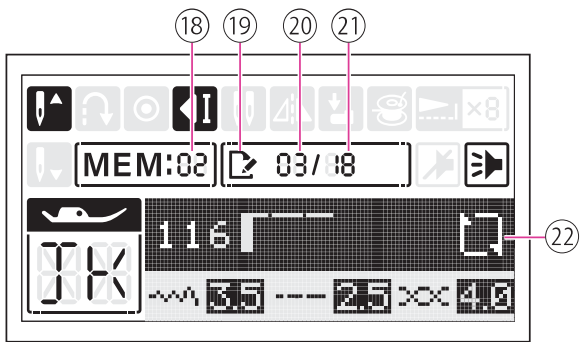
Instruction

LCD screen



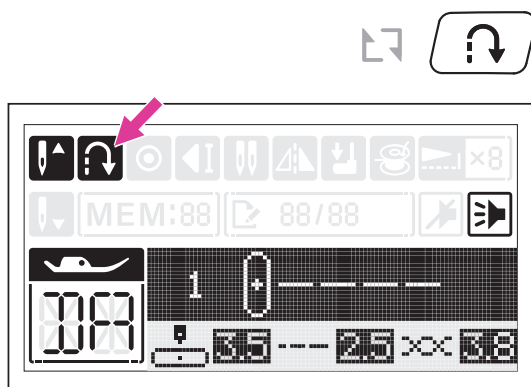
- ① Needle down position
- ② Needle up position
- ③ Reverse
- ④ Auto-lock
- ⑤ Auto-stop
- ⑥ Twin needle mode
- ⑦ Mirror
- ⑧ Bobbin winding
- ⑨ Amount of elongation
- ⑩ Buzzer on
- ⑪ Buzzer off
- ⑫ Straight stitch needle plate
- ⑬ Stitch number/stitch
- ⑭ Tension
- ⑮ Stitch length
- ⑯ Needle position/Stitch width
- ⑰ Suggested presser foot

Combination mode:



- ⑱ Memory group
- ⑲ Edit mode
- ⑳ Number of current unit
- ㉑ Total number of unit
- ㉒ Repeat sewing

Operation buttons



① Reverse button

When the Direct Pattern Group number 1-5 or Regular Pattern Group number 000 or 147 is selected, the machine will sew reverse if the reverse button is pressed. The machine will sew forward after the button is released.

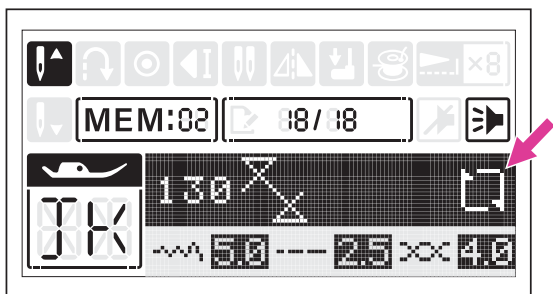
When the Direct Pattern Group number 6-9 or Regular Pattern Group number 001-008, 026-146 or 148-149 is selected, the machine will immediately sew 3 locking stitches when the reverse button is pressed, then automatically stop.

The LCD screen will display the reverse icon.

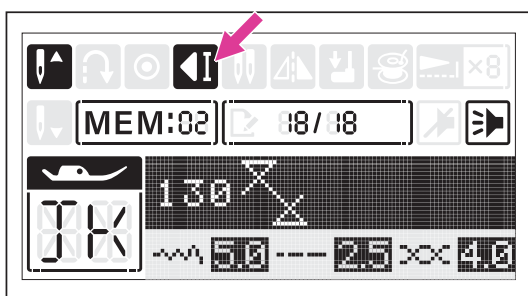


Repeat sewing function (In Combination mode)

Under the memory program, the reverse button is using for repeat sewing. The stitch combination can be sewn continuously if the icon appeared.



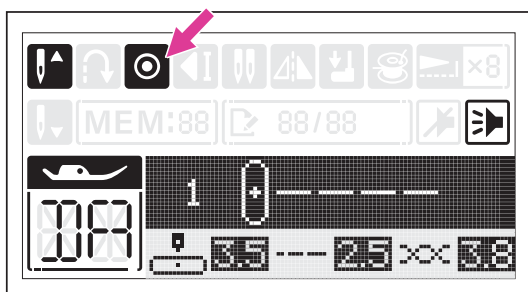
Press the reverse button to cancel the repeat sewing, machine will sew 3 locking stitches at the end of one complete combination. The LCD screen will display the auto-stop icon during sewing the last stitch.



② Auto-lock button

When machine is not sewing: Press the auto lock button, machine will sew 3 stitches in the same position then stop.

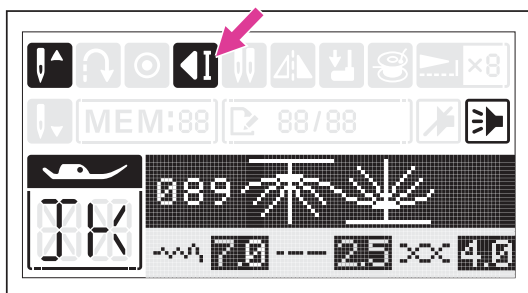
During machine is sewing: When Direct Pattern Group number 1-5 or Regular Pattern Group number 000 or 147 is selected, the machine will sew 3 locking stitches if the auto-lock button pressed. Then it will stop automatically.



During machine is sewing: When Direct Pattern Group number 6-9 or Regular Pattern Group number 001-008, 026-146 or 148-149 is selected, the machine will sew 3 locking stitches at the end of the current stitch if the auto-lock button pressed. Then it will stop automatically. The function can be cancelled if pressed the button once again during sewing.

The LCD screen will display the icon until the machine is stopped.

The LED light on the button will flash during auto-lock sewing and stop when it's finished.





③ Start/stop button

Press the start/stop button to start machine running. Press the start/stop button again to stop machine.

The LED light colors on the button will change according to its operation mode:

- Green light: the machine is ready or is running
- Orange light: Not in conditions to sew
- Red light: Machine can not sew

This way you may operate the machine without foot control.

Note

When the presser foot is up, press and hold the start/stop button, the machine will automatically lower the presser foot and start sewing.



④ Presser foot up/down position button

Press presser foot up/down button, presser foot will go up and press again to lower the presser foot.

Note

During sewing, can not use presser foot up/down button.



⑤ Needle up/down position button

Press needle up/down button, the needle will go up and pressing again will go down.

To set up needle up/down position function, please refer to "Settings" chapter for more information.

Note

During sewing, can not use the needle up/down button.

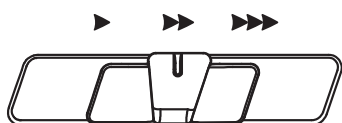


⑥ Thread cutter button

Press this button after finishing sewing and the machine will trim the thread.

Note

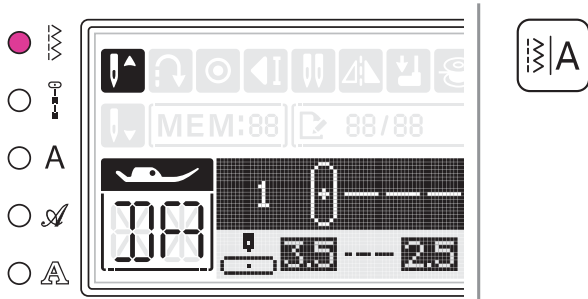
During sewing, can not use the thread cutter button.



⑦ Speed adjustment slider

In the sewing mode, the speed adjustment slider can control the sewing speed. To increase the speed, slide the lever to the right. To decrease the sewing speed, slide the lever to the left.

The sewing speed can be adjusted without foot controller.



⑧ Pattern group switch button

When machine is turned on, the LED light will be set at Direct Pattern Group. By pressing the pattern group switch button, LED light will move step by step to select the pattern group:

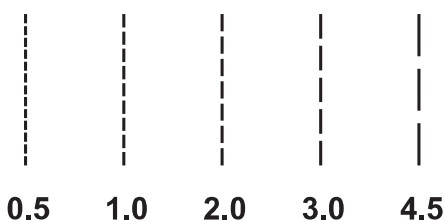
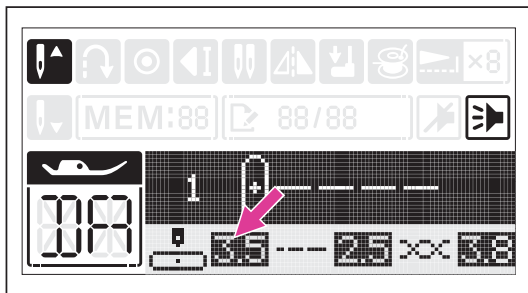
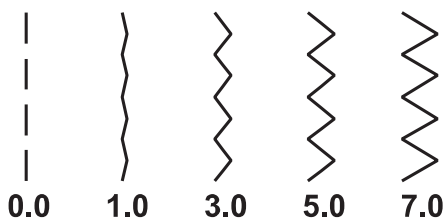
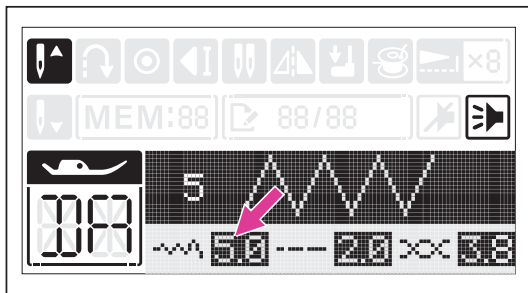
Direct Pattern Group →

Regular Pattern Group →

Alphabet Group-Block style →

Alphabet Group-Script style →

Alphabet Group-Outline style →



⑨ Stitch width adjustment button

When you select a stitch, the machine will automatically set the recommended stitch width values which will be shown on the LCD screen. The highlighted value will be erased if the setting be adjusted.

The stitch width can be regulated by pressing the stitch width adjustment buttons. For a narrower stitch, press the "-" button. For a wider stitch, press the "+" button.

Different stitches will have different width limitation.

Needle position adjustment

When the straight stitch is selected, Direct Pattern Group 1-4 or Regular Pattern Group 000 or 147 is selected, the needle position can be changed by adjusting the stitch width.

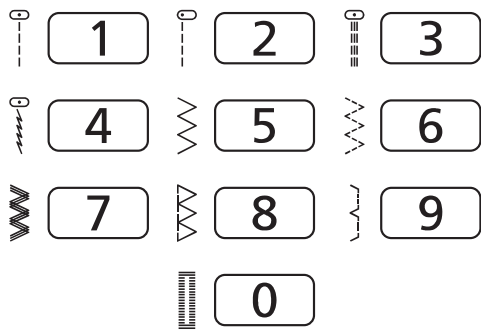
Press the "+" button, the needle position will be moved to the right. Press the "-" button, the needle position will be moved to the left.

⑩ Stitch length adjustment button

When you select a stitch, the machine will automatically set the recommended stitch length values which will be shown on the LCD screen. The highlighted value will be erased if the setting be adjusted.

The stitch length can be regulated by pressing the stitch length adjustment buttons. For a shorter stitch, press the "-" button. For a longer stitch, press the "+" button.

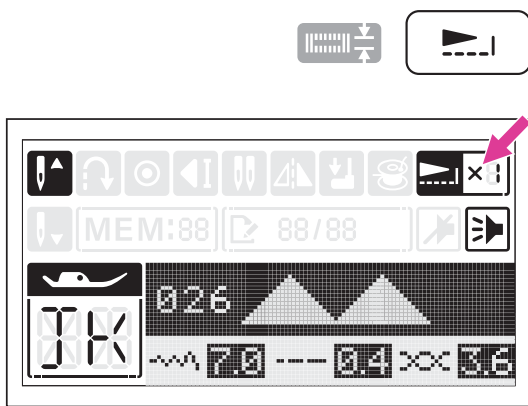
Different stitches will have different length limitation.



⑪ **Direct stitch selection and number buttons**

Under Direct Pattern Group, press the buttons to select the direct stitches shown beside the number buttons.

Under Regular Pattern Group and Alphabet Group Patterns, refer to the stitch chart and use the number buttons 0-9 to select the preference stitches.

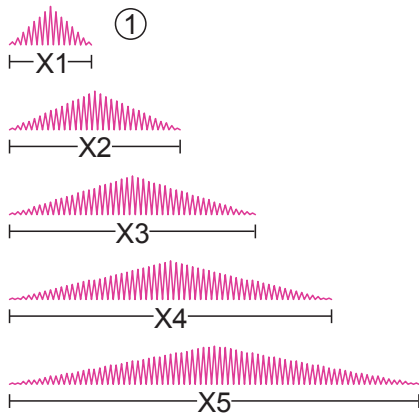


⑫ **Elongation button**

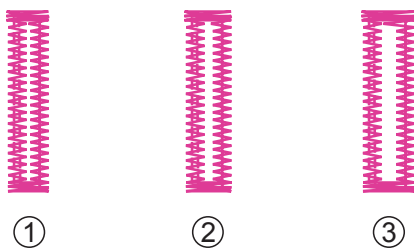
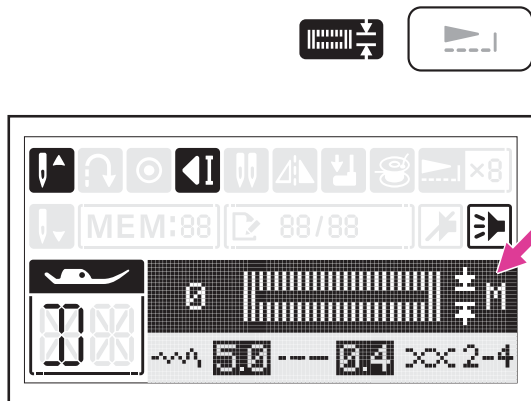
When the satin stitch is selected, Regular Pattern Group 026-045 can be elongated up to 5 times its normal size by pressing the elongation button.

The LCD screen will display the elongation icon and the machine will continue to sew the elongation stitch until the elongation button is pressed again.

When the width or length or stitch is changed, a greater variety of stitches are available.



① **Normal stitch size**



Buttonhole adjustment button

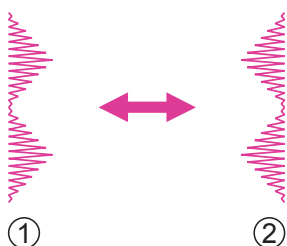
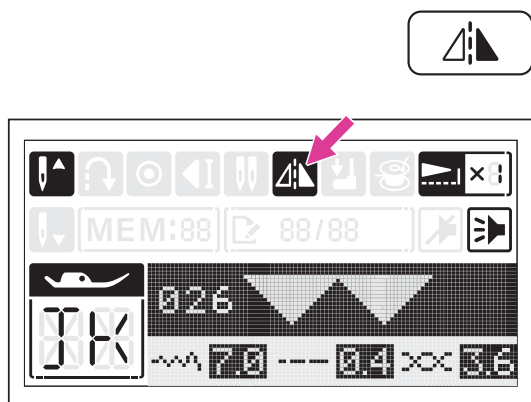
When the buttonhole stitch is selected, Direct Pattern Group number 0 or Regular Pattern Group number 009-020, the LCD screen will display the buttonhole width size.

Continuously press the elongation button to adjust buttonhole size, from M → L → S.

Note

- Use the seam ripper to cut the center of the buttonhole being careful not to cut any stitches on either side.
- Restart the buttonhole width will automatically default to M size setting.
- Refer to electronic buttonhole foot sewing chapter and set up the buttonhole sewing size precisely. Please refer to "Buttonhole stitch" chapter for more information.

- ① S: Small
- ② M: Medium
- ③ L: Large



⑬ Mirror button

The mirror function is to create the horizontal mirror image of selected stitch.

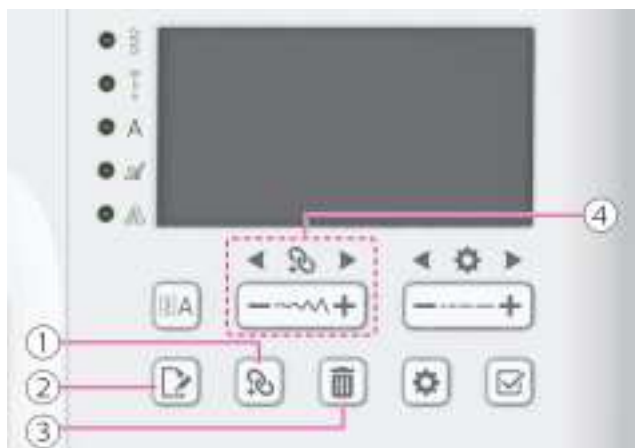
Except the Direct Pattern Group number 8, 9, 0, the Regular Pattern Group number 001, 009-025 and Alphabet Groups, the other stitches can be mirror imaged by pressing the mirror button.

The LCD screen will display the mirror icon and the machine will continue to sew the mirror stitch until the mirror button is pressed again.

The mirror function also will be canceled if the stitch changed.

- ① Normal stitch
- ② Mirror image stitch

Combination buttons



① **Combination button**

Press the combination button to enter the combination mode, and store the combination of stitches desired. Press the combination button again to leave the combination mode.

② **Edit button**

Press the edit button to enter the edit mode to edit the stitch length, stitch width, mirror and elongation of the stitches.

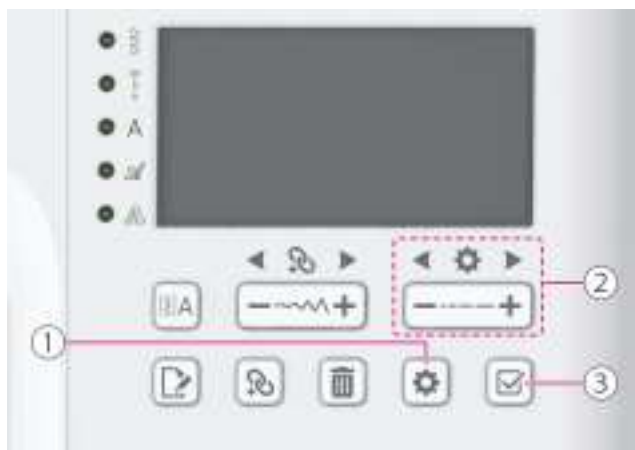
③ **Clear button**

Press the clear button to delete the stitch that you want to clear and the next stitch in the back will move forward.

④ **Switch button**

Use the switch button "+" or "-" to selected the memorized stitch.

Settings buttons



① Settings button

Press the settings button to enter or exit the settings mode.

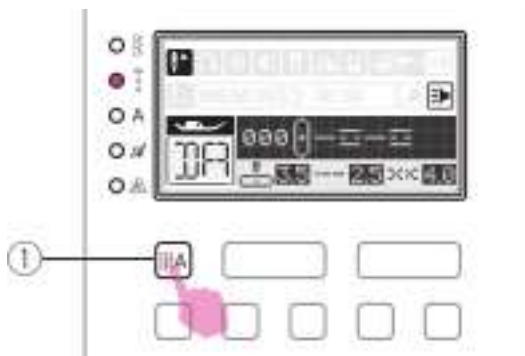
② Switch button

Use the switch button "+" or "-" to select setting functions.

③ Confirm button

Press the confirm button to enter or exit the selected function.

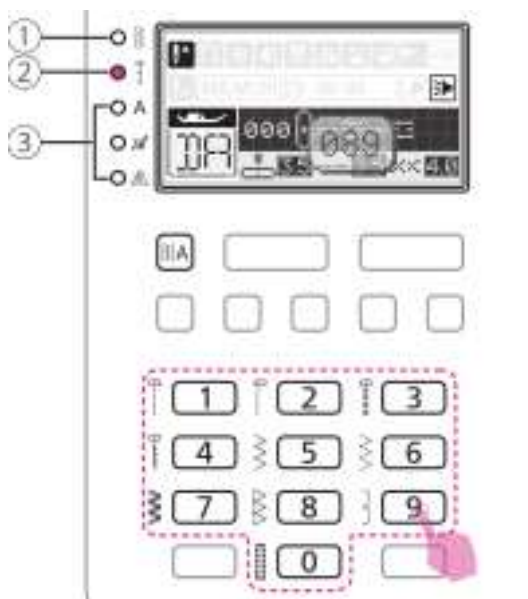
Selecting stitch



Select the desired stitch from the stitch chart.

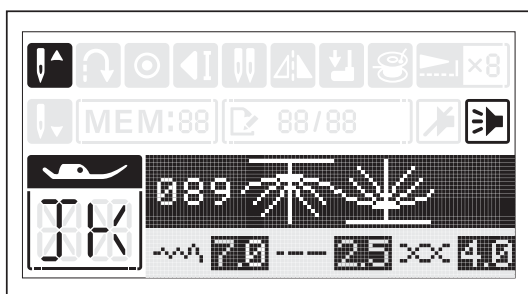
The LED light will be set at Direct Pattern Group. By pressing the pattern group switch button, LED light will move step by step to select the stitch mode.

- ① Pattern group switch button



Press the digits under the selected pattern group to select a stitch.

- ① Direct Pattern Group:
Use the numeric buttons 0-9 to select the most often used stitches.
- ② Regular Pattern Group:
Refer to stitch chart, use the number buttons 0-9 to select the preference stitches.
- ③ Alphabet Group-Block style/Script style/Outline style:
Refer to stitch chart, use the number buttons 0-9 to select the preference alphanumeric stitches.



Combination mode

To use the combine function, you can select each pattern to create combined patterns and continued sewing the combined patterns. This is convenient for patterns, such as names, that will be used often.

Note

- Multiple stitches selecting from Regular Pattern Group and Alphabet Groups can be combined and sewn together.
- This machine has 2 modules of program memory and each module can retain 40 units of stitches.
- Direct Pattern Group and Regular Pattern Group 001, 009-025 can not be memorized.

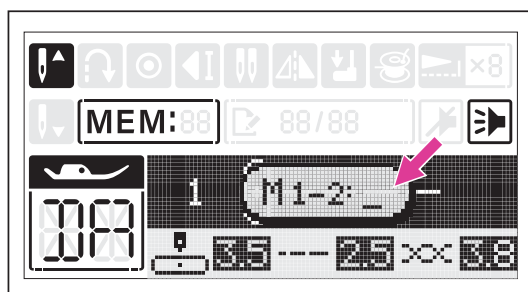


Combine stitches

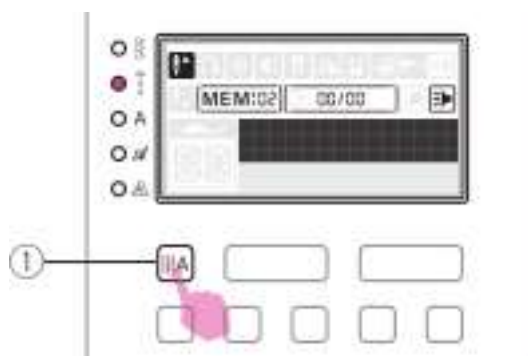
Turn the power switch to on ("I").

Press the combination button to enter the combination mode.

- ① Combination button

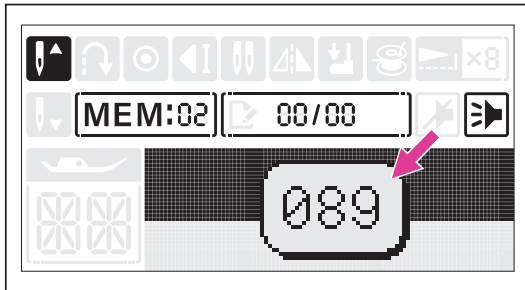


A sub-screen appears. Select a number 1 or 2 of the memory module in the cursor flashing.

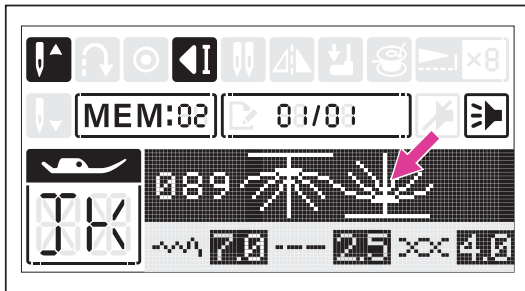


The memory screen appears automatically. Press pattern group switch button to change Regular Pattern Group or Alphabet Groups.

- ① Pattern group switch button



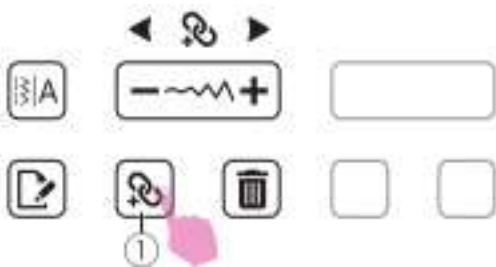
Press the desired stitch number directly. (e.g. 089)



The selected stitch displays on the LCD screen.

Repeat step several times for stitches combination.

Up to 40 characters can be combined in one memory module.

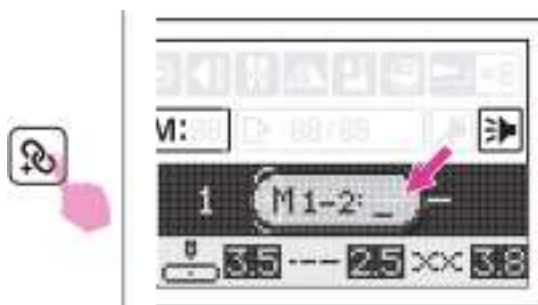


Press the **Combination** button to save the stitches combination, and return to standard sewing mode. Recall the memorized stitches and start to sew.

① **Combination** button

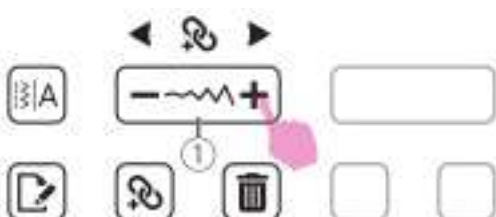
△ Attention

The selected stitch will be cleared from the memory program after closing the machine if you do not press the memory button again when you have completed your selection.



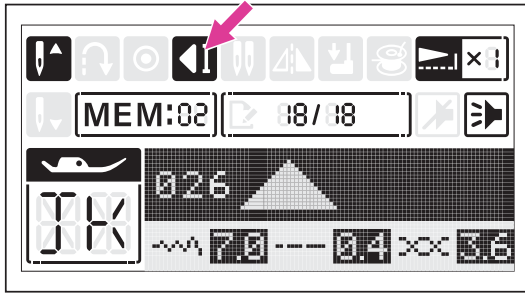
Recalling and sewing the memorized stitches

Press the combination button to enter the combination mode, and select the stored memory module (1 or 2) in the cursor flashing.



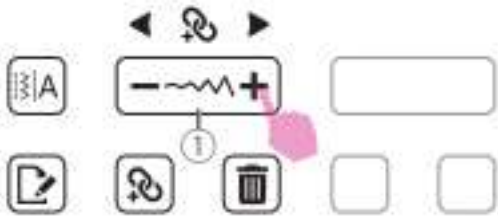
Scroll switch button "+" or "-" repeatedly, the LCD will display the stitches and the settings that have been stored one by one.

① **Switch** button



Note

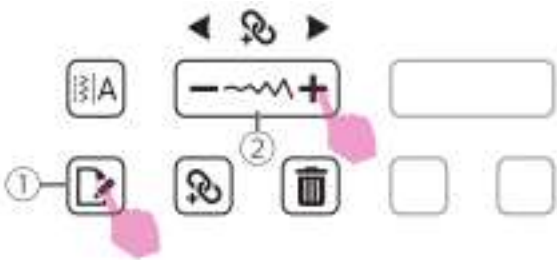
The last stitch will be tied off automatically under the combination mode.



Inserting stitches

Use the switch button "+" or "-" move prior to the stitch you left out. Then select the pattern group and stitch you would like to add, the stitch number you have selected is displayed, then add the new stitch.

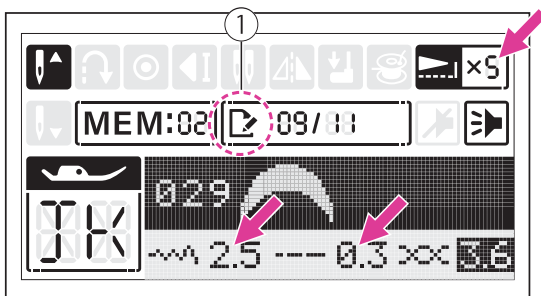
- ① Switch button



Editing stitches

Use the switch button "+" or "-" to select the stitch to edit. Press the edit button to edit the stitch.

- ① Edit button
- ② Switch button

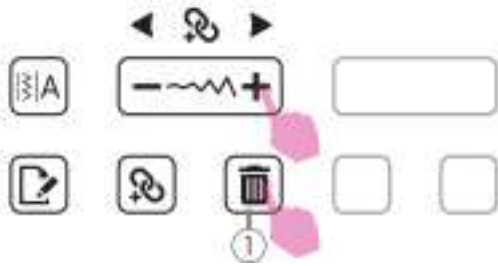


The stitch length, stitch width, mirror and elongation of the stitches can be adjusted manually depending on each stitch settings.

For details on the stitches' limitation, please refer to the "Operation buttons" chapter.

- ① Edit mode

Press the edit button to leave the edit mode.

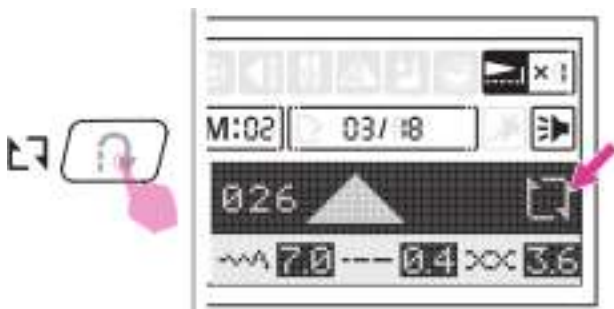


Clearing stitches

Use the switch button "+" or "-" to select the stitch that you want to clear.

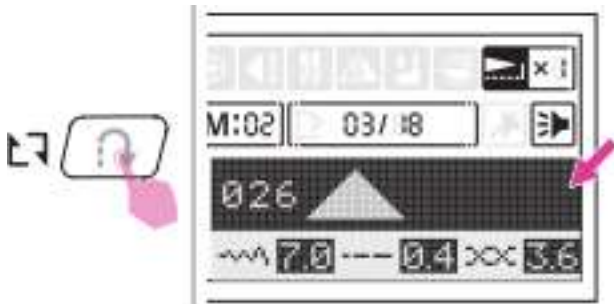
Press the clear button to delete the selected stitch and the next stitch in the back will move forward.

① Clear button



Repeat setting

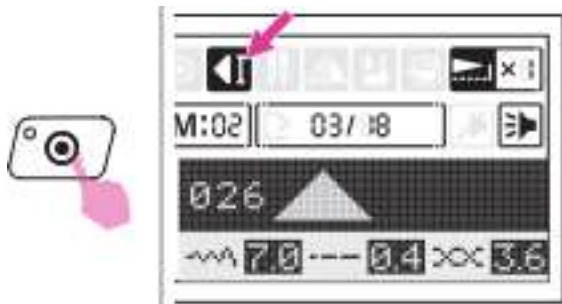
Under the memory mode, the reverse button is using for repeat sewing. The stitch combination can be sewn continuously if the icon appeared.



Press the reverse button again to cancel repeat sewing function, the icon will be disappeared on LCD screen.

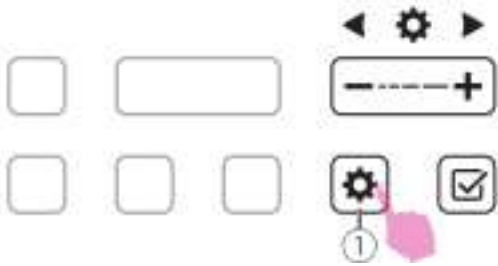
Note

The repeat sewing function setting returns to off as its default setting while leave the memory mode.



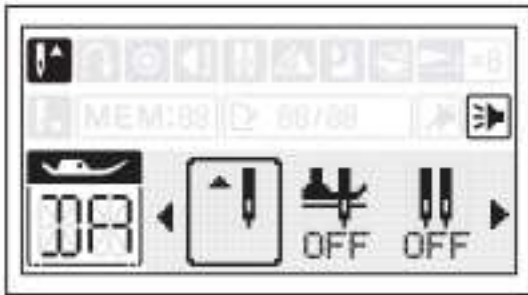
During machine is sewing, the machine will sew 3 locking stitches at the end of the current stitch if the auto-lock button pressed. Then it will stop automatically. **The LCD screen will display the auto-stop icon.** If pressing the start/stop button again, it will sew from the next stitch.

Settings



Press the settings button to enter Settings mode.

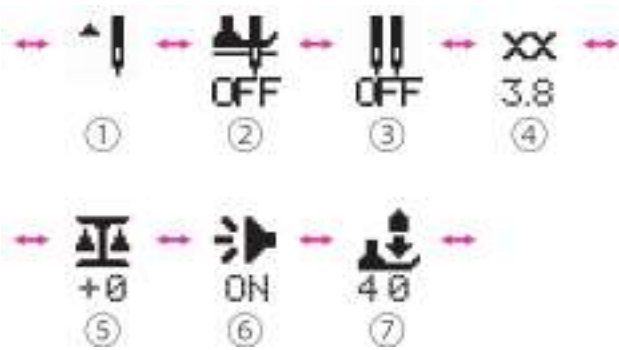
- ① Settings button

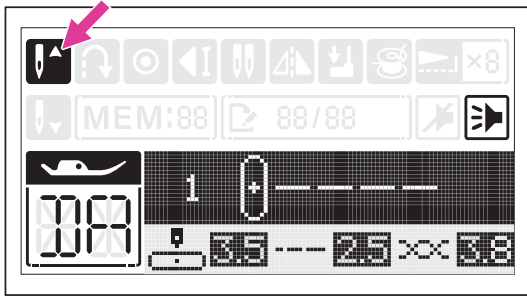


A list of setting functions will appear on the screen.

There are 7 function settings.

- ① Needle up/down Setting
- ② Pivot setting
- ③ Twin needle setting
- ④ Altering the thread tension
- ⑤ Balance adjustment
- ⑥ Hint sound
- ⑦ Presser foot pressure adjustment

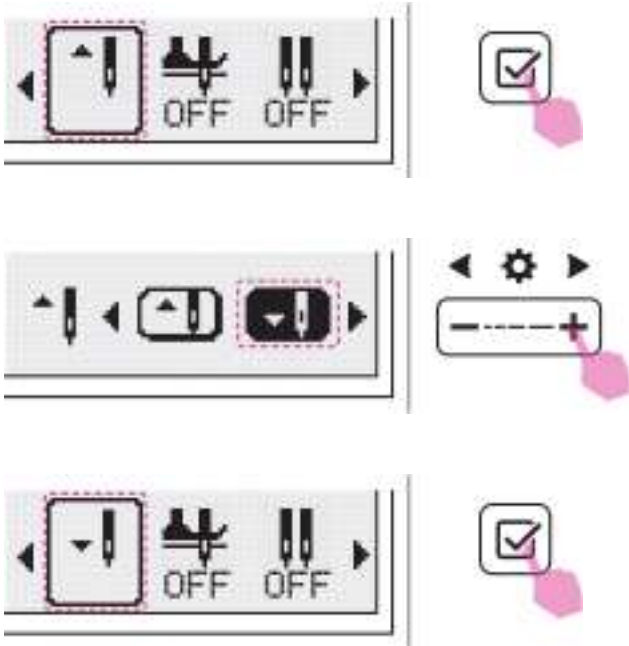




Needle up/down setting

You decide whether the needle stops in the highest or in the lowest position (i.e. in the fabric) when you stop sewing.

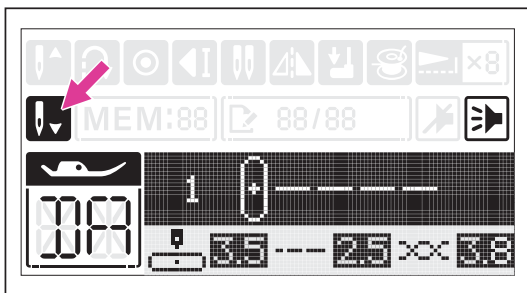
Default setting is on the highest position.



Press the confirm button to enter Settings.

Use the "+" or "-" switch to set the function.

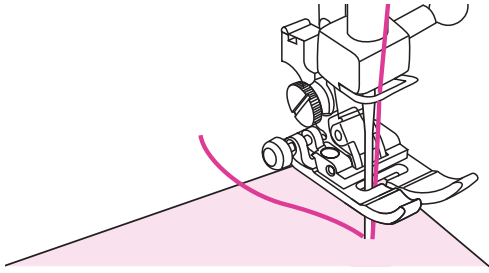
Press the confirm button again to save the current settings and return to the function list. The item will display the updated settings.



After setting, press the settings button again to return to the sewing screen. The LCD icons will display the updated settings.

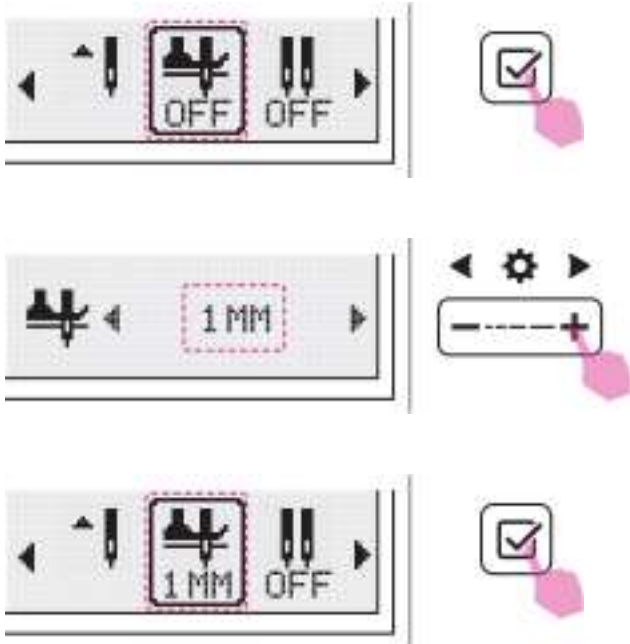
Note

If the needle is set to be down, then the LED light will turn on.



Pivot setting

The pivot height can be changed according to the type of fabric. When sewing is stopped, the needle is at lower position and the presser foot is raised to the set height.



Press the confirm button to enter Settings.

Use the "+" or "-" switch to set the function.

The default pivot setting is OFF. Press the button to cycle through the display options: OFF → 1mm → 2mm → 3mm → 4mm → 5mm → 6mm.

Press the confirm button again to save the current settings and return to the function list. The item will display the updated settings.

Note

- After setting the pivot function, the machine will automatically set the needle position down when sewing stops.
- If the needle position is set to be up, the pivot setting will be canceled simultaneously.

Twin needle setting

Be sure to set the twin needle mode when using the twin needle. Default setting is off.

Note

The twin needle function cannot be used under the following conditions:

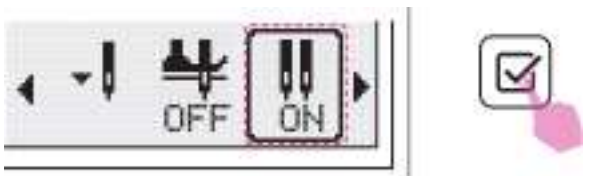
1. When a straight needle plate is installed
2. When a stitch without a twin needle option is selected
3. When combination mode is active



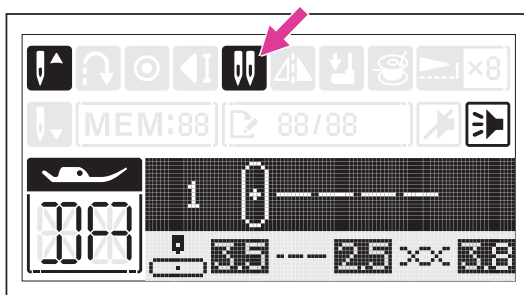
Press the confirm button to enter Settings.



Use the "+" or "-" switch to set the function.

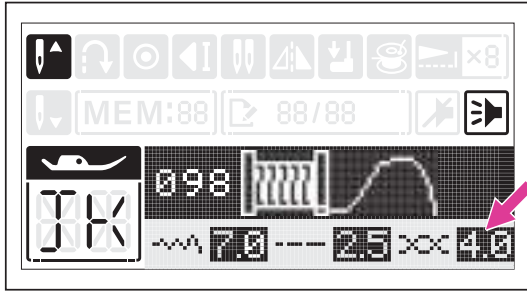


Press the confirm button again to save the current settings and return to the function list. The item will display the updated settings.



After setting, press the Settings button again to return to the sewing screen. The LCD icons will display the updated settings. The twin needle icon will display the updated settings.

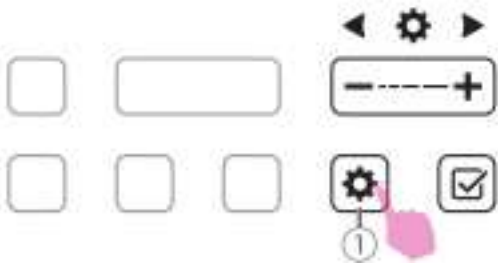
For the twin needle instruction, please refer to "Twin needle" chapter for more information.



Altering the thread tension

Proper tension setting is important for sewing. There is no single tension setting appropriate for all the stitch functions and fabrics.

After the stitch pattern is selected, the machine will automatically apply its default thread tension value.



Press the settings button to enter Settings mode.

① Settings button



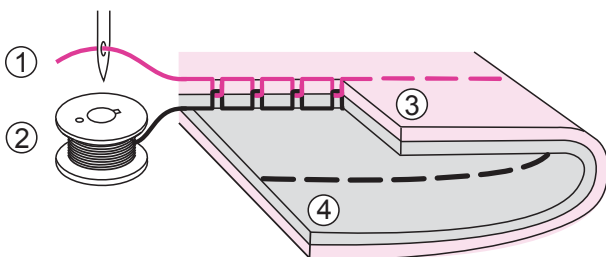
Press the confirm button to enter Settings.



Use the "+" or "-" switch to set the value.

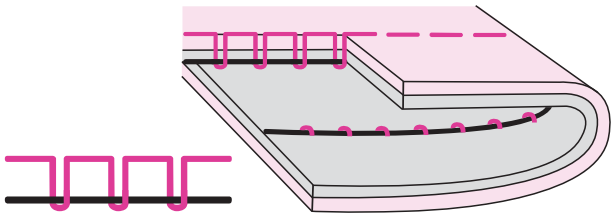


Press the confirm button again to save the current settings and return to the function list. The item will display the updated settings.

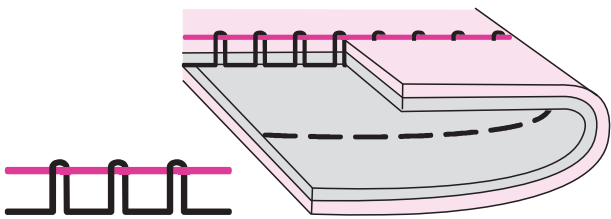


Normal thread tension for straight stitch sewing.

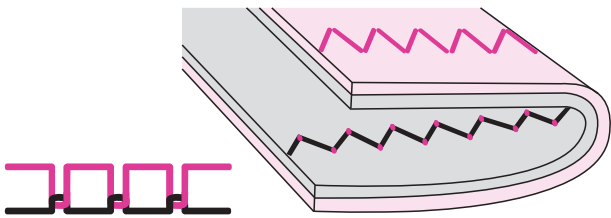
- ① Upper thread
- ② Bobbin thread
- ③ Surface
- ④ Wrong side



Thread tension is too loose for straight stitch sewing. To increase the tension, press the "+" button.



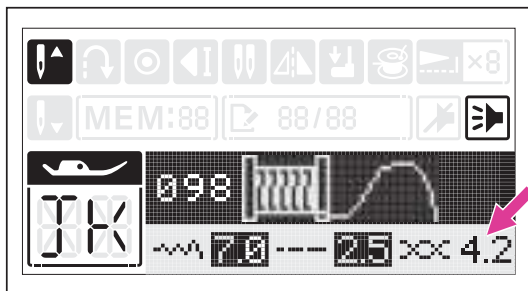
Thread tension is too tight for straight stitch sewing. To reduce the tension, press the "-" button.



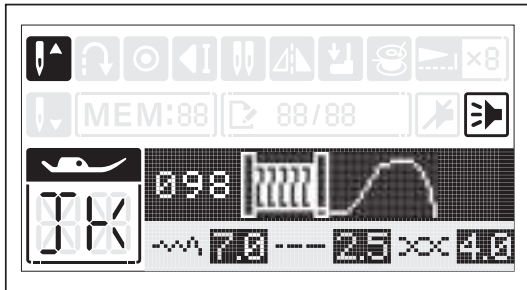
Normal thread tension for zig zag and decorative sewing.

For all decorative sewing you will always obtain a nicer stitch and less fabric puckering.

When a small number of the upper thread appears on the bottom side of fabric is the correct thread tension.



After setting, press the Settings button again to return to the sewing screen. The value will display the updated settings.



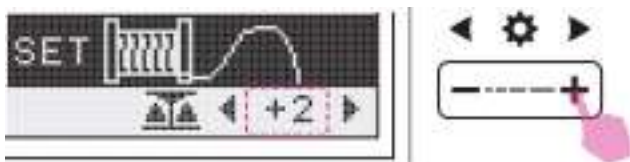
Balance adjustment

Different fabrics, threads and stabilizers will affect the sewing result. It may result in the inability to sew the correct pattern. Balance adjustment can correct such differences and the pattern can be made according to the most suitable adjustment for selected fabric.

Select a pattern to sew, comparing the sewing result with the desired patterns.



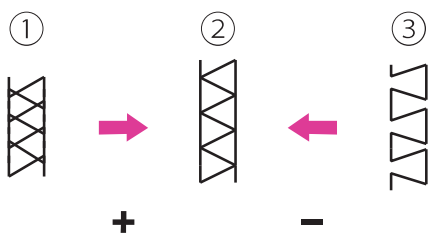
Press the confirm button to enter Settings. The selected stitch will be displayed on the screen.



Use the "+" or "-" switch to set the value. Start sewing to check the adjusted balance.

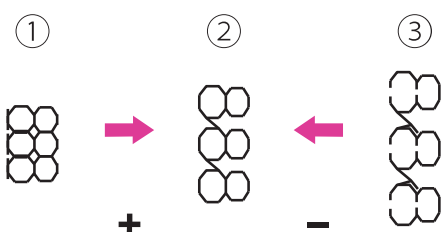


Press the confirm button again to save the current settings and return to the function list. The item will display the updated settings.



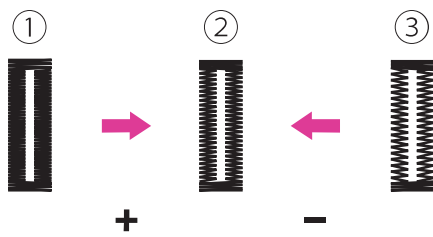
Adjusting distorted stretch stitches

- ① Stitches are too compressed, press the "+" button
- ② Stitches in normal situation
- ③ Stitches are too drawn out, press the "-" button



Adjusting distorted letters or numbers

- ① Letters or numbers are overlap, press the "+" button
- ② Letters or numbers in normal situation
- ③ Letters or numbers are too far, press the "-" button

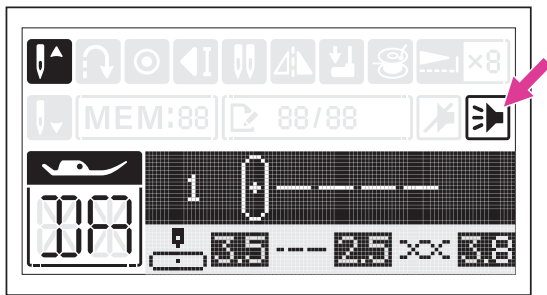


Adjusting the stitch density for buttonhole

- ① Buttonhole is too dense, press the "+" button
- ② Buttonhole in normal situation
- ③ Buttonhole is less dense, press the "-" button

Note

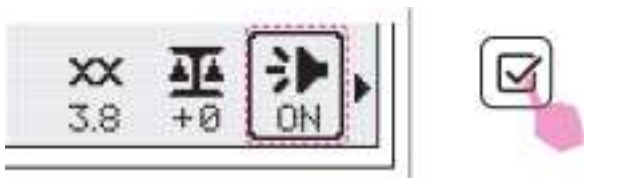
It takes practice on a scrap piece of the same type of fabric. Please use the same fabric of the project and do a sewing test in advance.



Hint sound

To turn on/off the sound. Default setting is on.

Press the confirm button to enter Settings.

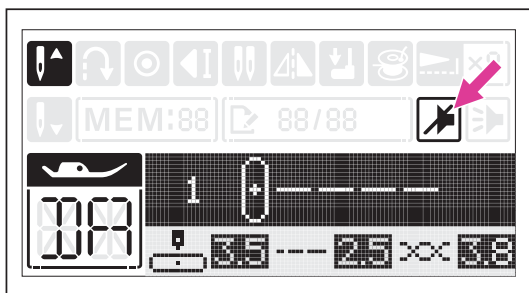


Use the "+" or "-" switch to set the function.



Press the confirm button again to save the current settings and return to the function list. The item will display the updated settings.





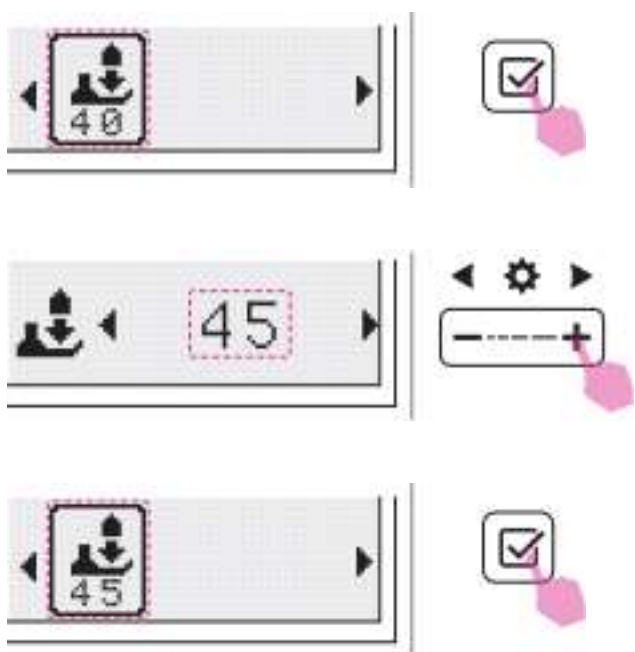
After setting, press the settings button again to return to the sewing screen. The LCD icons will display the updated settings.

Presser foot pressure adjustment

The most suitable presser foot pressure can be adjusted according to the fabric thickness.

When sewing thick fabrics, it is recommended to reduce the pressure on the presser foot. So presser foot will slightly raise to make the fabric easier to be moved.

When sewing thin fabrics, it is recommended to increase the presser foot pressure. It will prevent the fabric from moving freely.



Press the confirm button to enter Settings.

Use the "+" or "-" switch to set the value.

Press the confirm button again to save the current settings and return to the function list. The item will display the updated settings.



Stitch Chart

Stitch chart

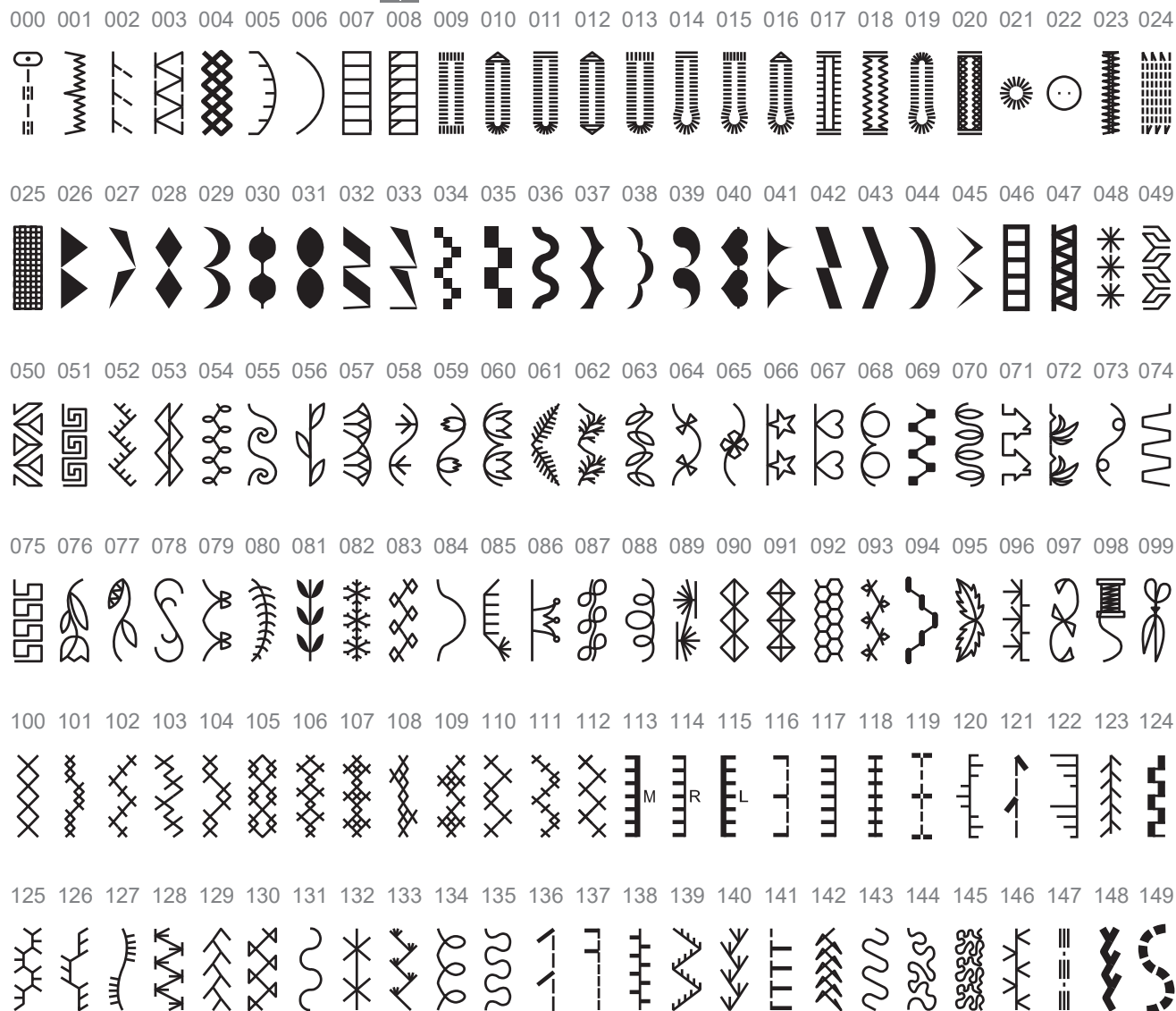
Note

- Patterns 046 & 047 can be used with Wing Needles and will provide best results (Wing needle are not included in the accessories).
- Please do not use Wing Needle in the combination patterns, will not provide good results and may cause danger.

Direct Pattern Group



Regular Pattern Group



Alphabet Group-Block style

000 001 002 003 004 005 006 007 008 009 010 011 012 013 014 015 016 017 018 019 020 021 022 023 024
0 1 2 3 4 5 6 7 8 9 A B C D E F G H I J K L M N O
025 026 027 028 029 030 031 032 033 034 035 036 037 038 039 040 041 042 043 044 045 046 047 048 049
P Q R S T U V W X Y Z a b c d e f g h i j k l m n
050 051 052 053 054 055 056 057 058 059 060 061 062 063 064 065 066 067 068 069 070 071 072 073 074
o p q r s t u v w x y z Ä Å Æ Ñ Ö Ø Ç Ü ä å æ ë
075 076 077 078 079 080 081 082 083 084 085 086 087 088 089 090 091 092 093 094 095 096 097 098 099
è é ê ñ ö õ ø ì ç ü ũ ß & ? ! _ ' , . - () @ + =

Alphabet Group-Script style

000 001 002 003 004 005 006 007 008 009 010 011 012 013 014 015 016 017 018 019 020 021 022 023 024
0 1 2 3 4 5 6 7 8 9 A B C D E F G H I J K L M N O
025 026 027 028 029 030 031 032 033 034 035 036 037 038 039 040 041 042 043 044 045 046 047 048 049
P Q R S T U V W X Y Z a b c d e f g h i j k l m n
050 051 052 053 054 055 056 057 058 059 060 061 062 063 064 065 066 067 068 069 070 071 072 073 074
o p q r s t u v w x y z Ä Å Æ Ñ Ö Ø Ç Ü ä å æ ë
075 076 077 078 079 080 081 082 083 084 085 086 087 088 089 090 091 092 093 094 095 096 097 098 099
è é ê ñ ö õ ø ì ç ü ũ ß & ? ! _ ' , . - () @ + =

Alphabet Group-Script style

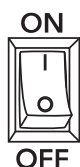
000 001 002 003 004 005 006 007 008 009 010 011 012 013 014 015 016 017 018 019 020 021 022 023 024
0 1 2 3 4 5 6 7 8 9 A B C D E F G H I J K L M N O
025 026 027 028 029 030 031 032 033 034 035 036 037 038 039 040 041 042 043 044 045 046 047 048 049
P Q R S T U V W X Y Z a b c d e f g h i j k l m n
050 051 052 053 054 055 056 057 058 059 060 061 062 063 064 065 066 067 068 069 070 071 072 073 074
o p q r s t u v w x y z Ä Å Æ Ñ Ö Ø Ç Ü ä å æ ë
075 076 077 078 079 080 081 082 083 084 085 086 087 088 089 090 091 092 093 094 095 096 097 098 099
è é ê ñ ö õ ø ì ç ü ũ ß & ? ! _ ' , . - () @ + =



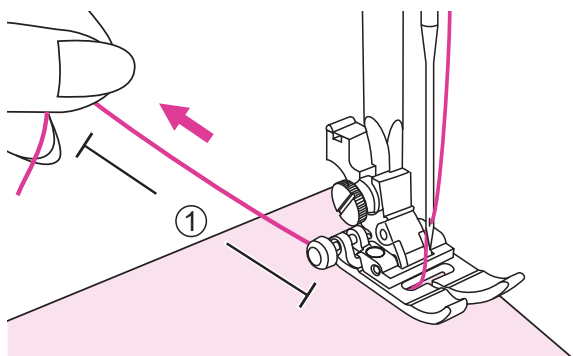
| Sewing Basics

Starting to sew

Make sure you follow the needle/fabric/thread combinations and use the suggested presser foot before sewing.

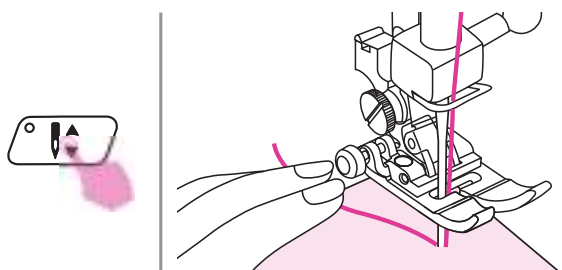


1. Turn the power switch to on ("I").

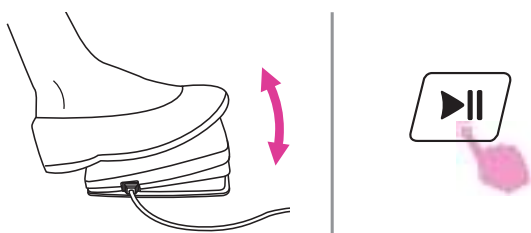


2. Place the fabric under the presser foot, pass the thread under the presser foot, and then pull out about 10cm of thread toward the rear of the machine.

① 10cm



3. Press the needle up/down position button to lower the needle into the fabric at the beginning of the stitching.

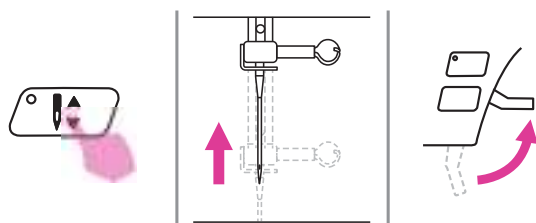


4. Slowly press down the foot control or long press the start/stop button to start sewing, presser foot will automatically lower at the same time.

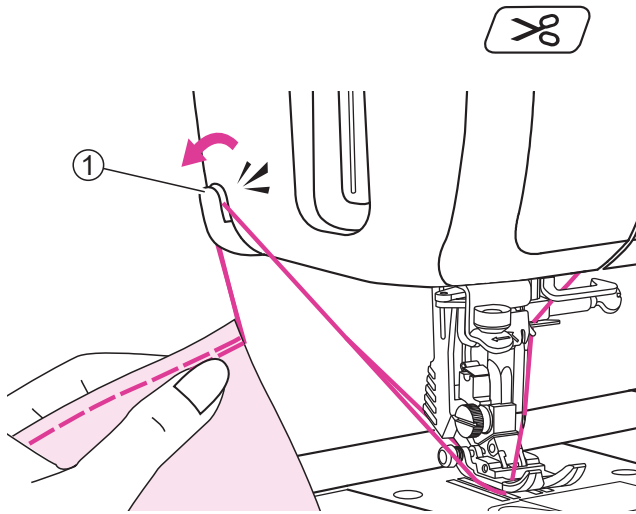
Release the foot control or press the start/stop button again to stop the machine.

Note

You can use reverse sewing for back tacking and reinforcing seams by pressing the reverse button. Please refer to "Useful skills" chapter for more information.



5. Press the needle up/down position button to raise the needle. Raise the presser foot lifter and remove the fabric.



6. Press the thread cutter button to trim the threads.

Or guide both threads to the side of the face plate and into the thread cutter to cut them.

- ① Thread cutter

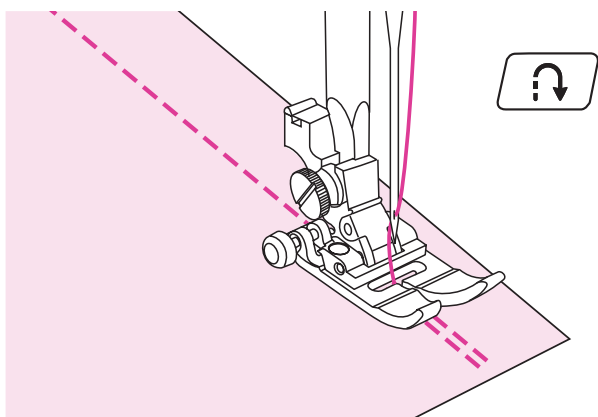
Useful skills

Various ways to achieve better results for your sewing projects are described below. Refer to these tips when sewing your project.

The results depend on types of fabrics and stitches. Please use the same fabric of the project and do a sewing test in advance.

For the trial sewing, use a piece of fabric and thread that are same as those used for your project and check the thread tension and stitch length and width.

Since the results differ depending on types of stitching and layers of fabric sewn, perform the trial sewing under the same conditions that will be used with your project.

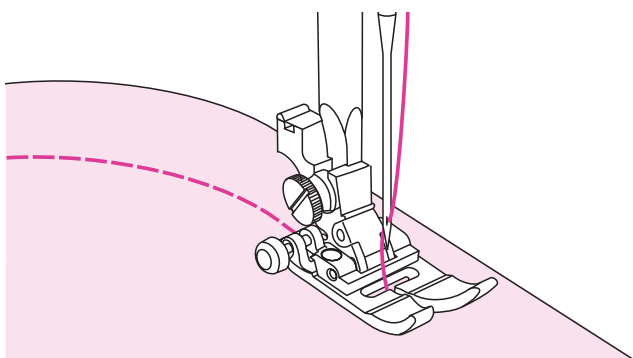


Reverse sewing

Reverse stitching is used to secure the threads at the beginning and at the end of a seam.

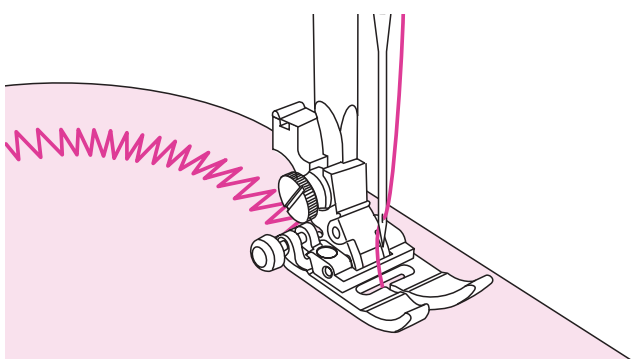
Press the reverse button and sew 4-5 stitches.

The machine will sew forward when the button is released.

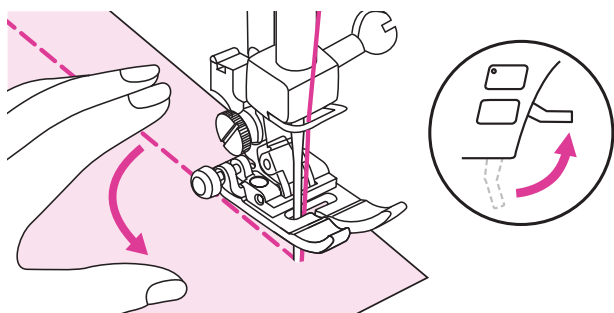


Sewing curves

Slightly change the sewing direction to sew around the curve.



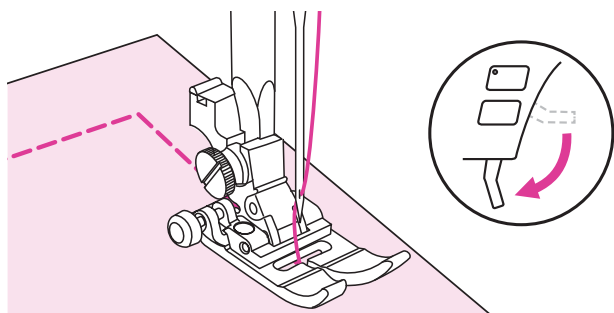
When sewing along a curve while using a zigzag stitch, select a shorter stitch length in order to obtain a finer stitch.



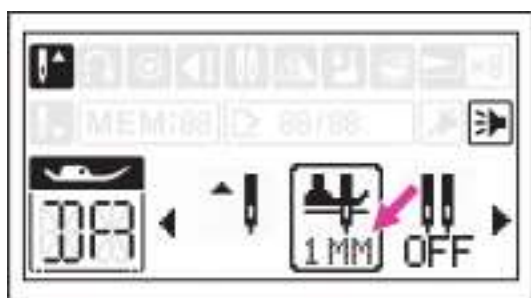
Sewing corners

Stop the sewing machine when you reach a corner.

Lower the needle into the fabric. Raise the presser foot lifter. Use the needle as a pivot and turn the fabric 90°.

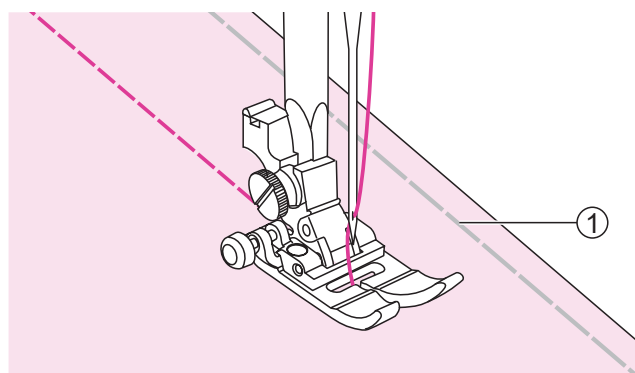


Lower the presser foot lifter and resume sewing.



When you want to change the sewing direction, you can also set the pivot function. When you stop sewing, the needle will stay in the fabric, and presser foot will automatically lift, which can easily rotate the fabric. This function is very useful. (Presser foot height setting, please refer to "Settings" chapter for more information.)

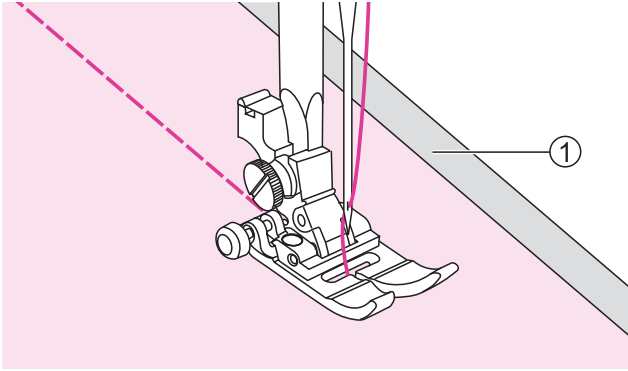
Pivot setting



Sewing stretch fabrics

Baste the pieces of fabric together, and then sew without stretching the fabric.

- ① Basting

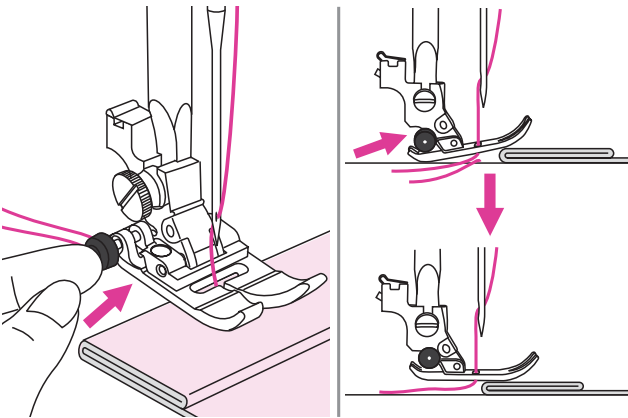


Sewing thin fabrics

When sewing thin fabrics, the stitches may become misaligned or the fabric may not feed correctly. If this occurs, place thin paper or stabilizer material under the fabric and sew it together with the fabric.

When you have finished sewing, tear off any excess paper.

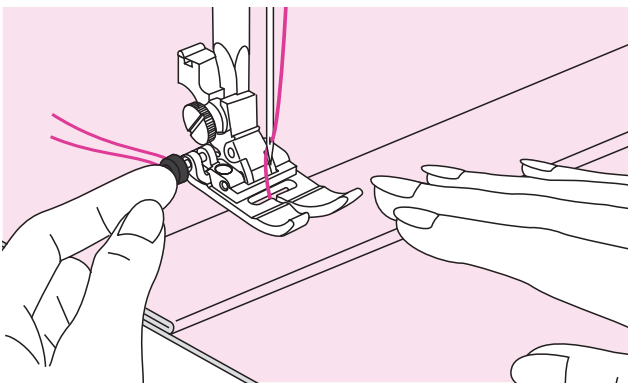
① Stabilizer material or paper



Sewing heavy fabric

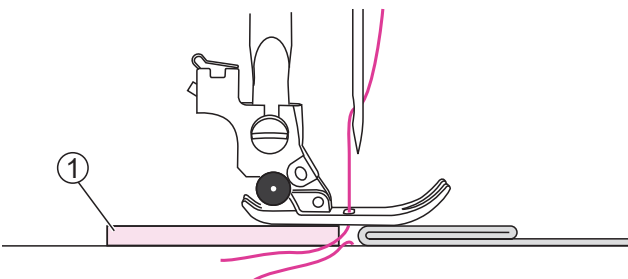
The black button on the left side of the presser foot will lock the presser foot in a horizontal position if you push it in before lowering the presser foot.

This ensures even feeding at the beginning of a seam and helps when sewing multiple layers of fabrics such as sewing over seams when hemming jeans.



When you reach the point of an increased thickness, lower the needle and raise the presser foot lifter. Press the toe of the foot to the horizontal line and push in the black button, then lower the foot and continue sewing.

The black button releases automatically after sewing few stitches.



You also can place another piece of fabric with the same thickness at the back of the seam. Or support the presser foot while feeding by hand and sewing toward the folded side.

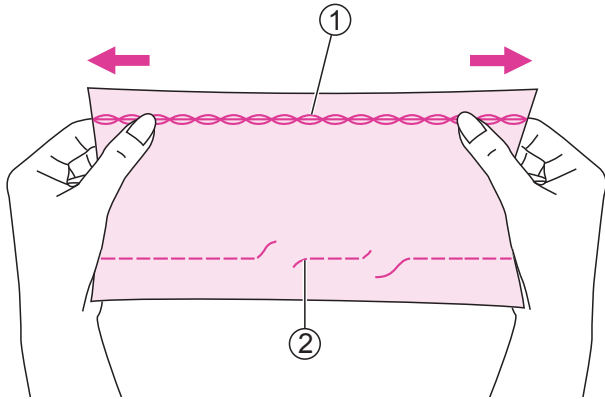
① Cardboard or thick fabric



Utility Stitches

Stretch stitch

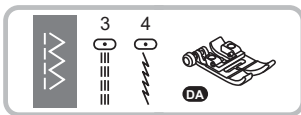
Use this stitch with knitted tricot or other stretchy fabrics. The stitch enables your seam to stretch without breaking the thread.



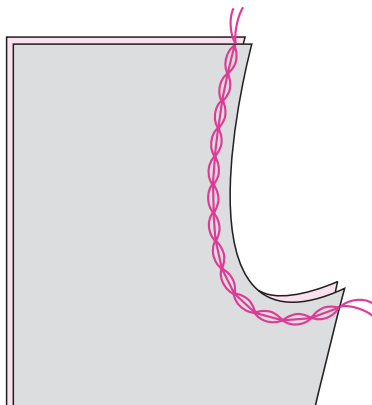
Good for easy to ravel and knit fabrics. It's good for joining durable fabric such as denims.

These stitches can also be used as a decorative top stitches.

- ① Stretch stitch
- ② Straight stitch

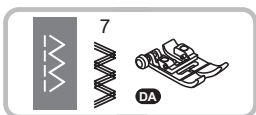


Using the all purpose foot.

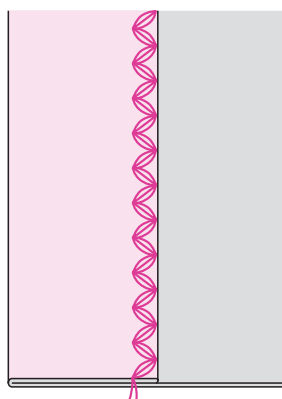


Straight stretch stitch

Straight stretch stitch is used to add triple reinforcement to stretch and hardwearing seams.



Using the all purpose foot.



Zigzag stretch stitch

Triple zigzag stretch stitch is suitable for firm fabrics like denim, poplin, etc.

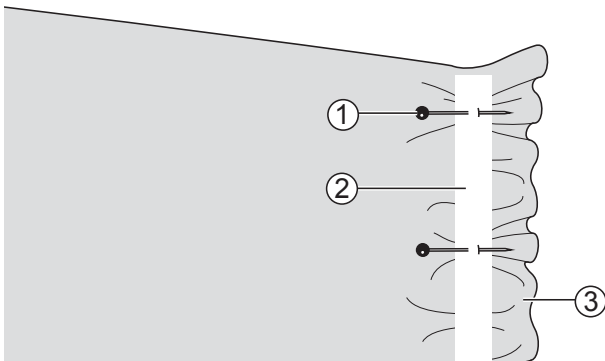
Sewing stretch fabrics and elastic tape

When elastic tape is attached to the cuff or waist of a piece of clothing, the finished dimensions will be that of the stretched elastic tape. Therefore, it is necessary that a suitable length of the elastic tape be used.

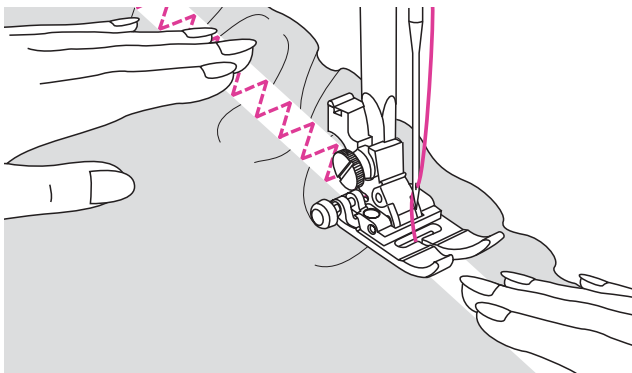


Using the all purpose foot.

Pin the elastic tape to the wrong side of fabric at a few points to make sure that the tape is uniformly positioned on the fabric.

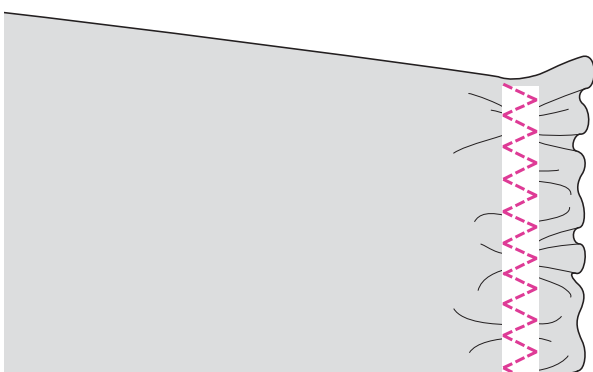


- ① Pin
- ② Elastic tape
- ③ Wrong side



Sew the elastic tape to the fabric while stretching the tape so that it is the same length as the fabric.

While pulling the fabric behind the presser foot with your left hand, pull the fabric at the pin nearest the front of the presser foot with your right hand.

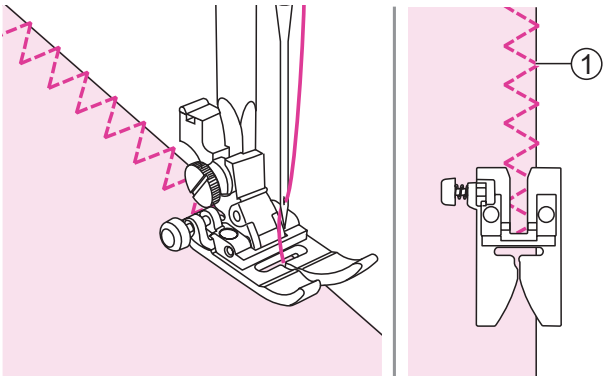
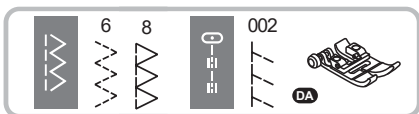


Note

When sewing, be sure that the needle does not touch any pins, otherwise the needle may bend or break.

Overcasting stitch

Sewing overcasting stitches along the edge of fabric to prevent it from fraying.

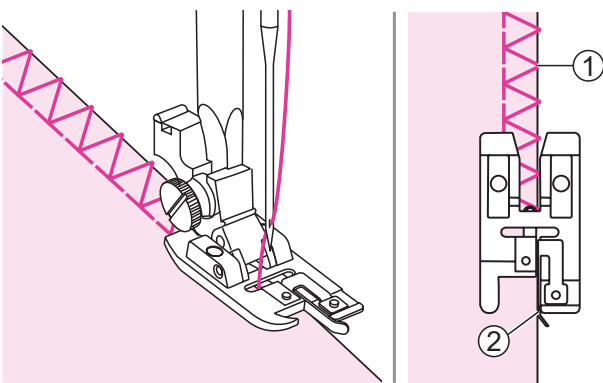
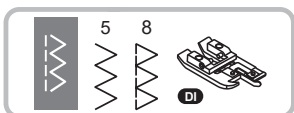


Using the all purpose foot

Attach the all purpose foot.

Sewing the overcasting along the edge of the fabric so that the needle drops over the edge of the fabric on the right side.

- ① Needle drop point



Using the overcasting foot

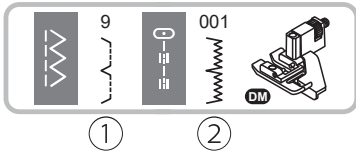
Attach the overcasting foot.

Sew the fabric with the fabric edge against the guide of the overcasting foot.

- ① Needle drop point
- ② Guide

Blind Hem

Secure the bottom of skirts and pants with a blind hem, this stitch will sew with invisible stitch on the right side of the fabric.

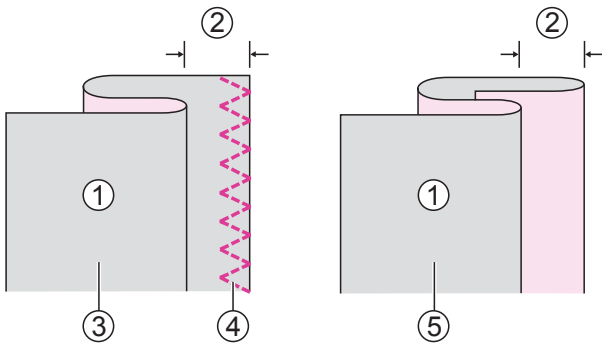


Using the blind hem foot.

- ① Blind hem/lingerie for firm fabrics.
- ② Blind hem for stretch fabrics.

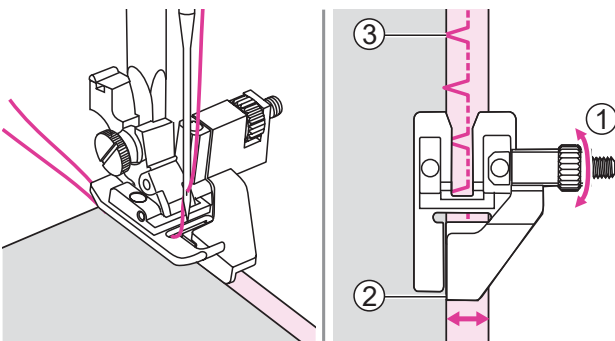
Note

Please use the same fabric of the project and do a sewing test in advance.



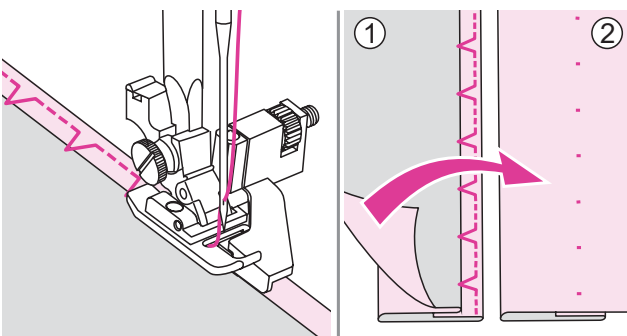
Fold the fabric as illustrated with the wrong side up.

- ① Wrong side
- ② 5mm
- ③ For heavy weight fabric
- ④ Overcasting stitch
- ⑤ For light/medium weight fabric



Place the fabric under the foot. Turn the handwheel forwards until the needle swings fully to the left. It should just pierce the fold of the fabric. If it does not, adjust the stitch width accordingly. Adjust the guide by turning the knob so that the guide just rests against the fold.

- ① Knob
- ② Guide
- ③ Needle drop point



Sew slowly, guiding the fabric carefully along the edge of the guide.

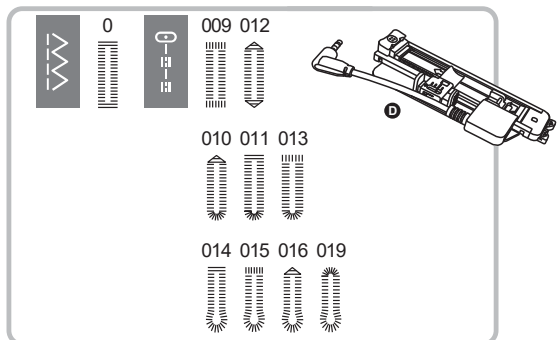
Turn over the fabric.

- ① Wrong side
- ② Right side

Buttonhole stitch

Buttonholes can be adapted to the size of the button.

For stretch fabric or thin fabric, it is recommended to use a stabilizer for a better buttonhole sewing. Slightly reduce upper thread tension to produce better results.



Using the electronic buttonhole foot.

0/011: For thin or medium fabric

009/013: Heavy-duty buttonholes with vertical bar tacks

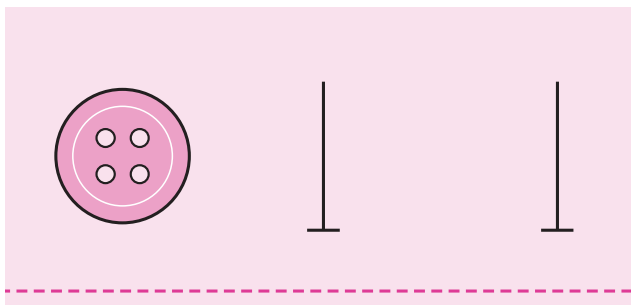
014/015: For suits or overcoats

016/019: For jeans or trousers

010/012: Reinforced waist tapered buttonhole

Note

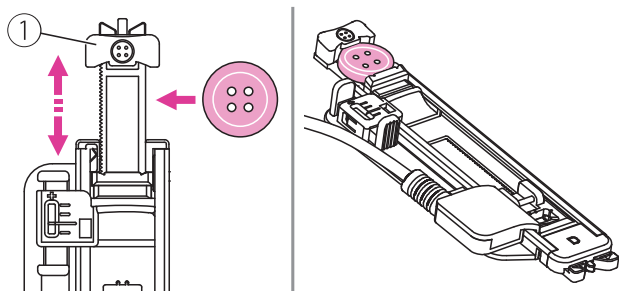
Please use the same fabric of the project and do a sewing test in advance.



Mark the positions of the buttonhole on the fabric.

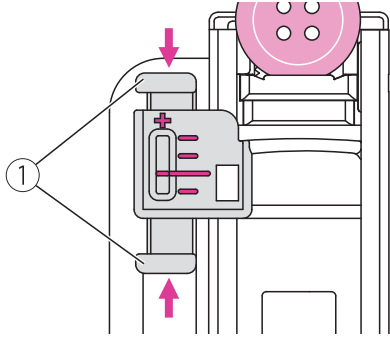
The maximum buttonhole length is 3cm. (Total of diameter + thickness of button.)

The size of the buttonhole is determined by the button inserted in the button plate.



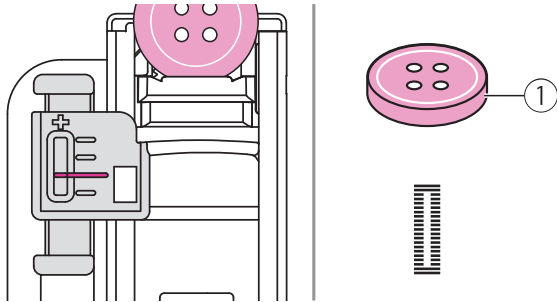
Pull the button holder plate to the back, and place the button in it. Push back the button holder plate against the button to hold it tight.

① Button holder plate



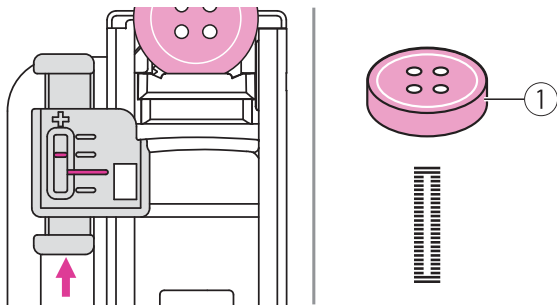
Consider the shape and height of each button, buttonhole fine tuning adjuster provides fine adjustment of the buttonhole length.

- ① Buttonhole fine tuning adjuster



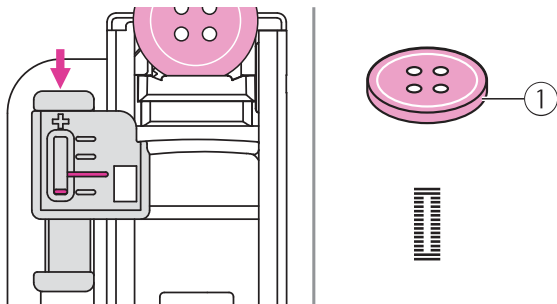
The red mark is the standard setting for regular button, adjust the pointer align with the red mark.

- ① Regular button



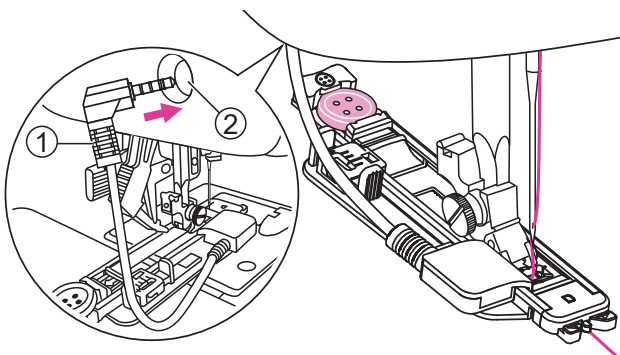
The buttonhole length may need to be increased for thick button, adjust the pointer toward to "+" for fine tuning.

- ① Thick button



The buttonhole length may need to be decreased for thin button, adjust the pointer toward to "-" for fine tuning.

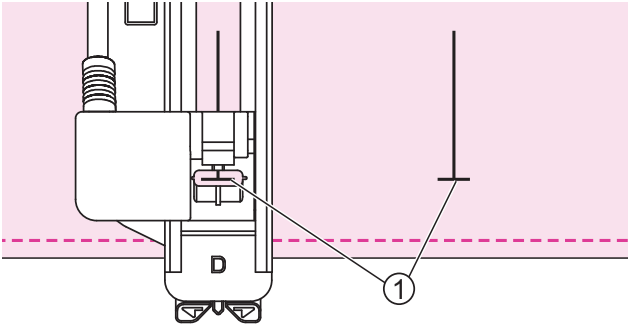
- ① Thin button



Attach the electronic buttonhole foot and plug the cord into the socket behind the face cover.

The upper thread should be passed through the hole of electronic buttonhole foot and bring the upper thread to the front of electronic buttonhole foot.

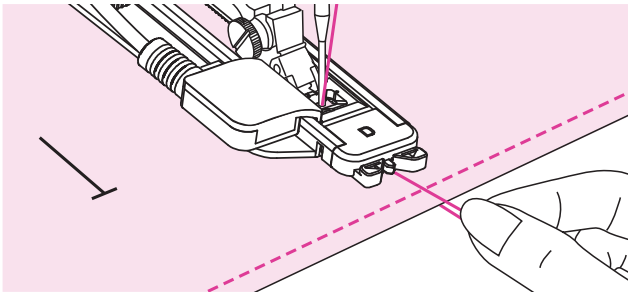
- ① Cord
- ② Socket



Position the fabric under the presser foot so that the centerline's mark is aligning with the center of the buttonhole foot.

① Starting point

Select the buttonhole stitch. Adjust the stitch width and the stitch length to the desired width and density.

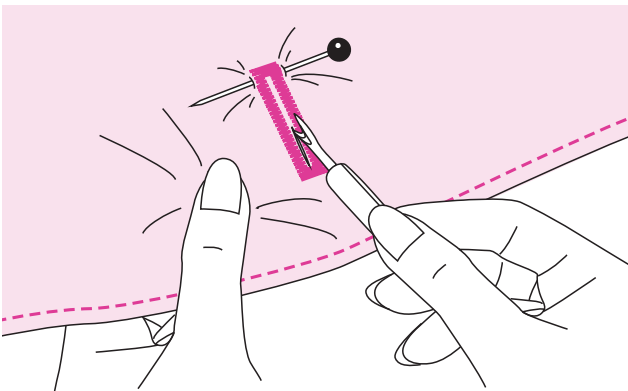


Slightly hold the end of the upper thread and start sewing. Pull two lines together.

Note

- Gently feed the fabric by hand.
- Before stopping, the machine will automatically sew a reinforcement stitch after the buttonhole is sewn.

When you finish sewing, raise the presser foot lifter and cut the thread. To sew over the same buttonhole, raise the presser foot lifter.

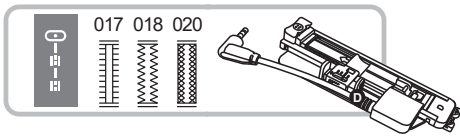


Use the seam ripper to cut the center of the buttonhole being careful not to cut any stitches on either side. Use a pin as a stopper at the bar tack so you do not cut too much.

Note

When cutting the buttonhole with the seam ripper, do not place your hands in the cutting direction, otherwise injuries may result.

Making a buttonhole on stretch fabrics

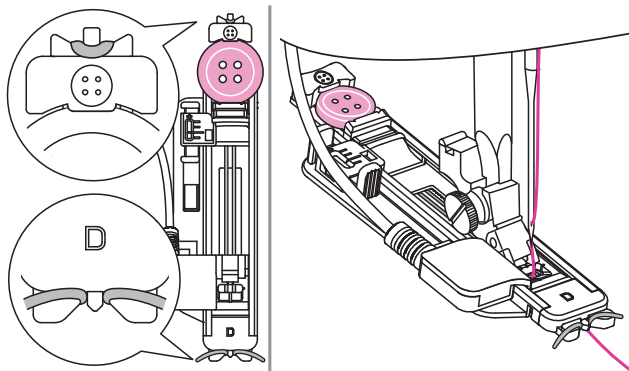


017: For light to medium weight woven fabrics

018: For stretch or woven fabric

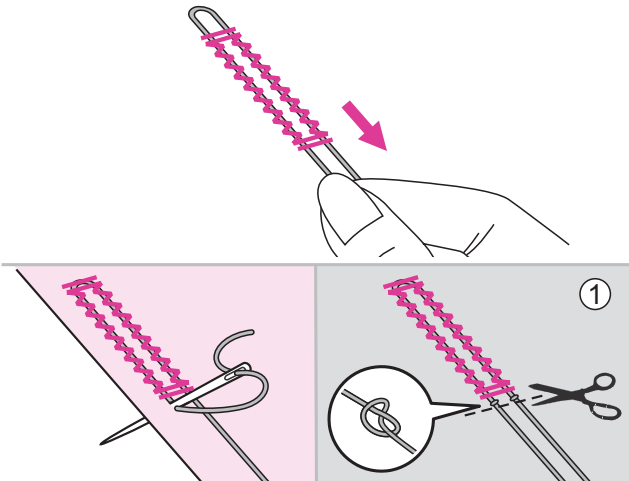
020: For stretch fabric

When sewing buttonholes on stretch fabric, hook heavy thread or cord under the buttonhole foot.



Attach the electronic buttonhole foot and plug the cord into the socket above the presser foot bar. Bring the gimp thread ends to the front of the foot and insert them into the grooves, then tie them there temporarily. Lower the presser foot lifter and start sewing.

Set the stitch width to match the diameter of the gimp thread.



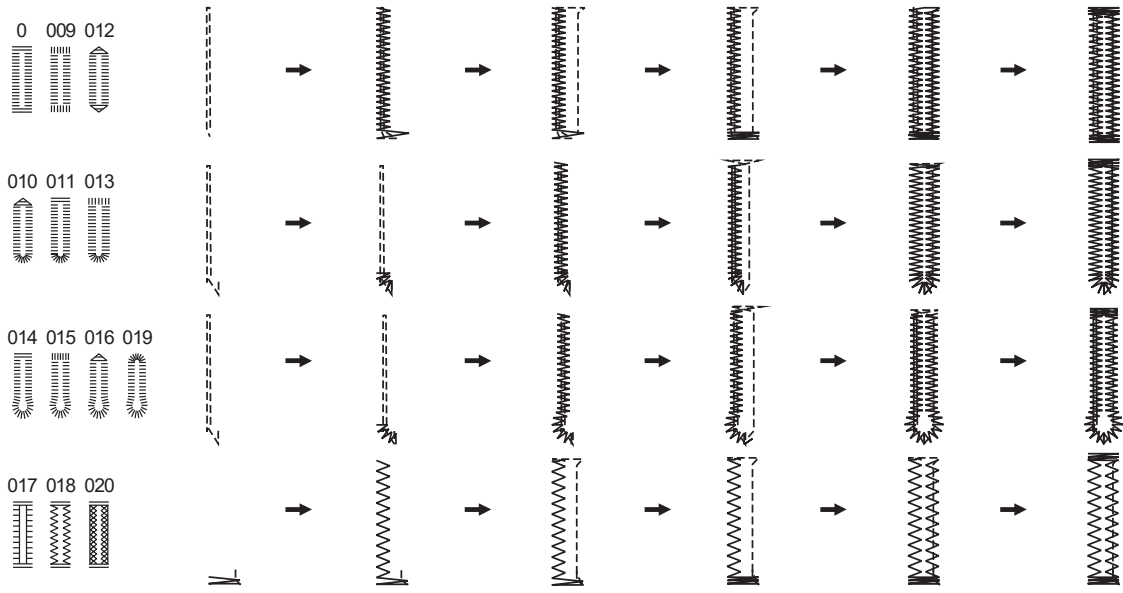
Once sewing is completed, pull the gimp thread gently to remove any slack. Cross the gimp in front of the needle and thread gimp ends into a large needle, pull to the wrong side and knot ends before cutting excess.

① Wrong side

Note

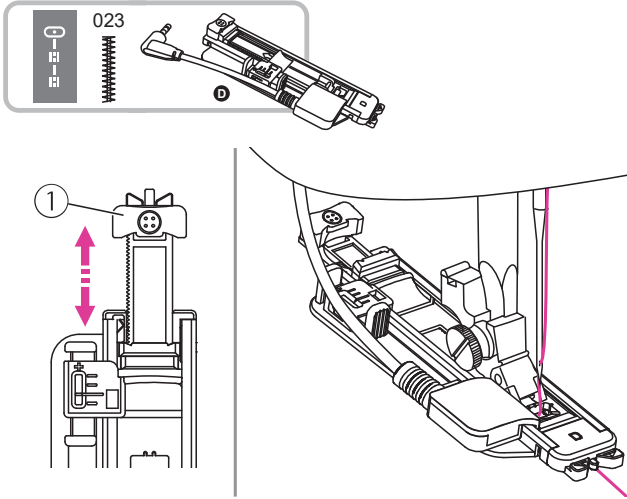
It is suggested that you sew with a stabiliser material under the fabric.

* Buttonholes are sewn from the front of the presser foot to the back, as shown.



Bar tack stitch

Bar tack stitch is used to reinforce points subject to strain, such as pocket corners and openings.



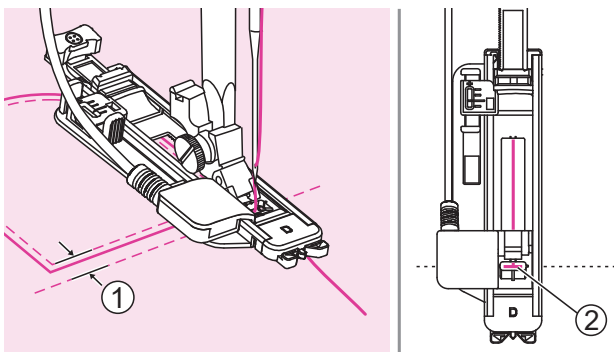
Using the electronic buttonhole foot.

Extend the button holder plate and set to the desired length. Adjust the stitch width and the stitch length to the desired width and density.

① Button holder plate

Attach the electronic buttonhole foot and plug the cord into the socket above the presser foot bar.

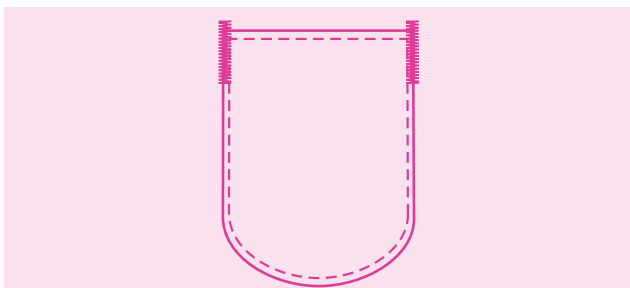
The upper thread should be passed through the hole of electronic buttonhole foot and bring the upper thread to the front of electronic buttonhole foot.



Position the fabric so that the needle is 2mm in front of where you want the sewing to start, and then lower the presser foot lifter.

- ① 2mm
- ② Starting point

Slightly hold the end of the upper thread and start sewing.



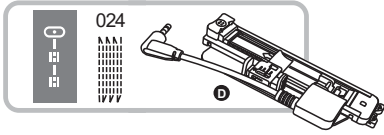
Bar tack stitches are sewn.

Note

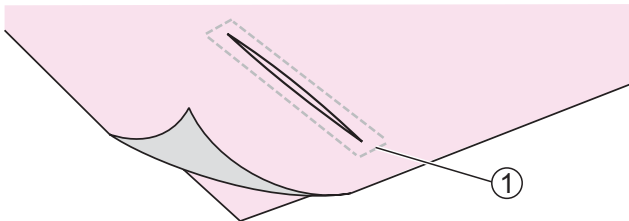
It is suggested that you sew with a stabilizer material under the fabric.

Darning stitch

Darning a small hole or a tear before it becomes larger can save a garment. Choose a fine thread in a color as close to your garment as possible.

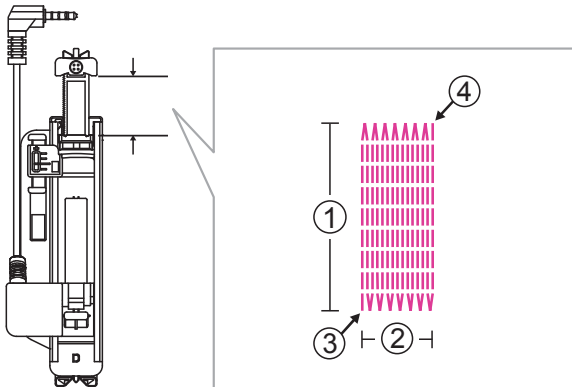


Using the electronic buttonhole foot.



Baste the upper fabric and the under fabric together.

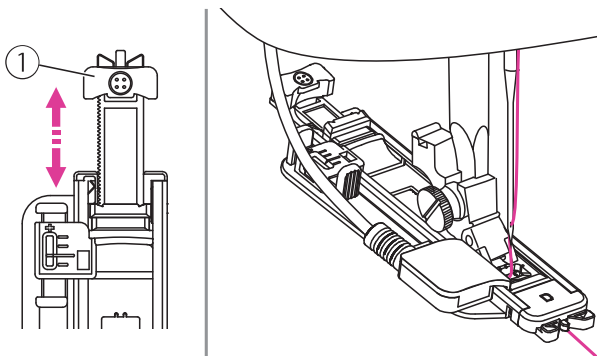
① Basting



The size of one darn cycle is variable.

However, the maximum stitch length is 2.6cm and the maximum stitch width is 7mm.

- ① The length of sewing
- ② The width of sewing
- ③ Start
- ④ Stop

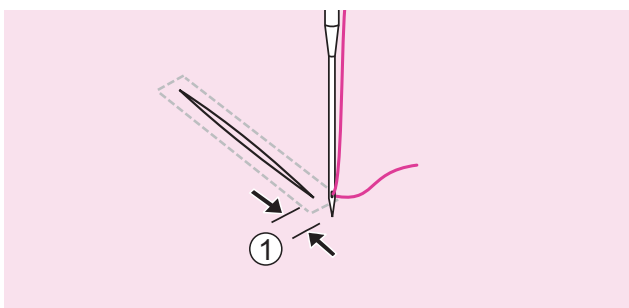


Extend the button holder plate and set to the desired length. Adjust the stitch width and the stitch length to the desired width and density.

① Button holder plate

Attach the electronic buttonhole foot and plug the cord into the socket above the presser foot bar.

The upper thread should be passed through the hole of electronic buttonhole foot and bring the upper thread to the front of electronic buttonhole foot.



Position the fabric so that the needle is 2mm in front of the area to be darned, and then lower the presser foot lifter.

① 2mm

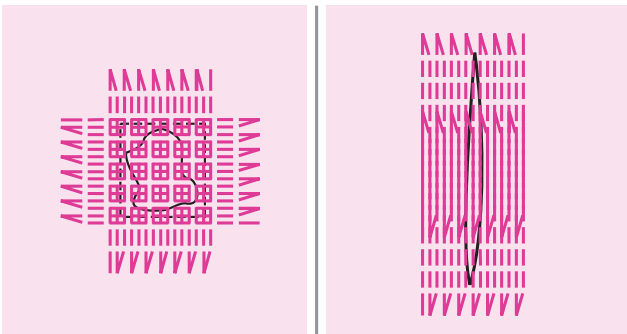
Slightly hold the end of the upper thread and start sewing.



Darning stitches are sewn from the front of the presser foot to the back, as shown.

Note

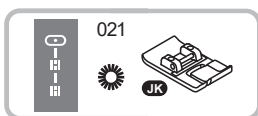
If the fabric does not feed, for example, because it is too thick, increase the stitch length.



If the sewing range is too big to sew, then we suggest you can sew several times (or cross sew) to get better sewing result.

Eyelet stitch

Eyelet stitches are used for making belt holes and other similar applications.

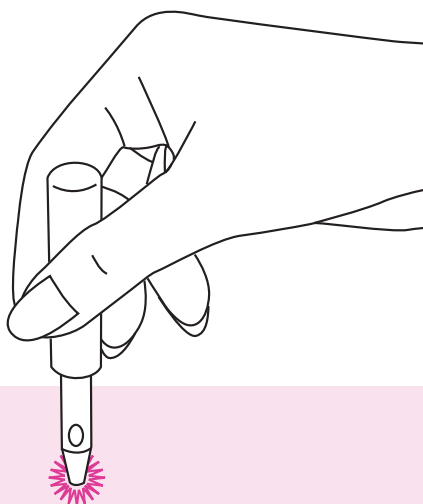


Using the satin stitch foot.

Press the "+" or "-" stitch width adjustment button to alter the size of the eyelet.

Lower the needle into the fabric at the beginning of the stitching, and then lower the presser foot lifter.

Once sewing is completed, the machine automatically sews reinforcement stitches, then stops.



Make a hole at the center using an eyelet punch.

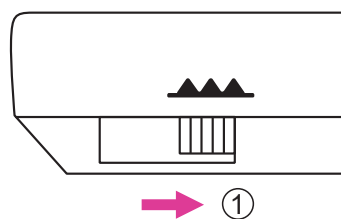
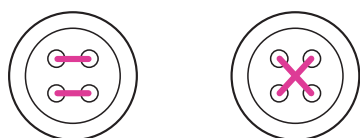
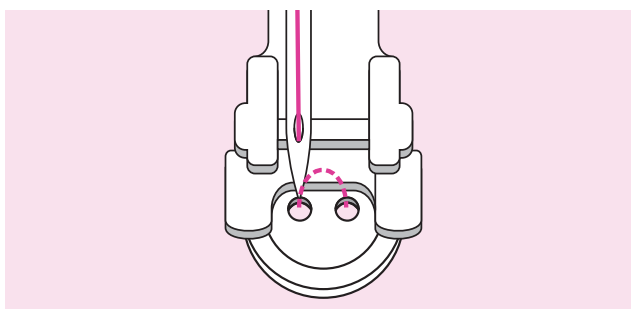
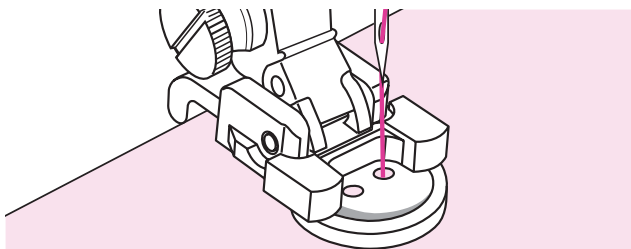
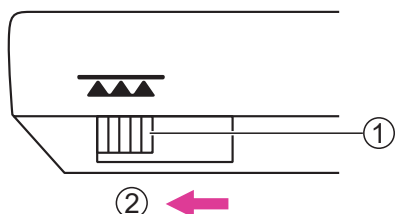
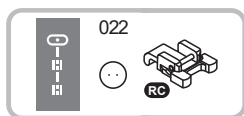
* Eyelet punch is not included with the machine.

Note

- When using the eyelet punch, place thick paper or some other protective sheet under the fabric before punching the hole in the fabric.
- If thin thread is used, the stitching may be coarse. If this occurs, sew the eyelet twice one on top of the other.

Button sewing

Buttons can be sewn on with the sewing machine. Buttons with 2 or 4 holes can be attached.



Using the button sewing foot.

Move the drop feed lever to lower the feed dogs.

- ① Drop feed lever
- ② Lowered position

Put the work under the foot and place the button in desired position, then lower the foot.

Select the buttonhole sewing stitch and adjust the stitch width according to the distance between the two holes of the button.

Turn the handwheel to check that the needle goes cleanly into the left and right holes of the button.

For buttons with 4 holes, sew through the front two holes first, push work forward and then sew through the back two holes.

When you finish the work, move the drop feed lever to raise the feed dogs.

- ① Raised position

Zipper insertion

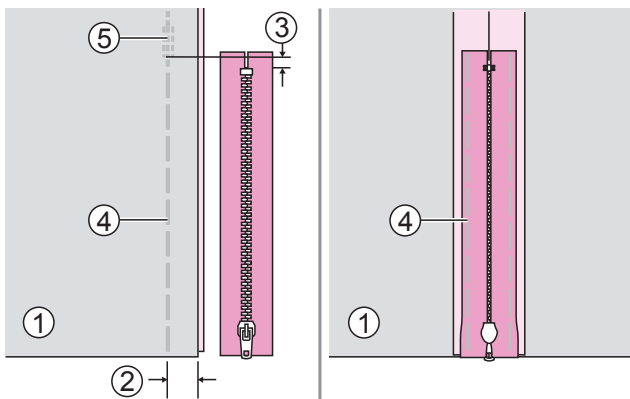
This foot can be set to sew on each side of the zipper, the edge of the foot guides the zipper to ensure straight placement.



Using the zipper foot.

⚠ Attention

- Zipper foot should be used for sewing straight stitches only. It is possible that the needle could hit the presser foot and break when sewing other stitches.
- When sewing, be sure that the needle does not touch the zipper, otherwise the needle may bend or break.

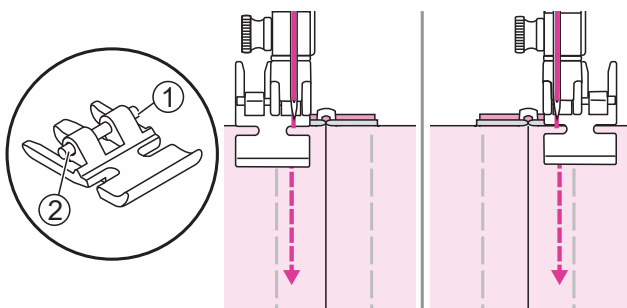


Inserting a centered zipper

Place the right sides of the fabric together. Sew a bottom seam 2cm from the right edge of the zipper bottom stop position. Sew few reverse stitches for fixed. Increase the stitch length to maximum, set the tension below 2 and baste the remaining length of the fabric.

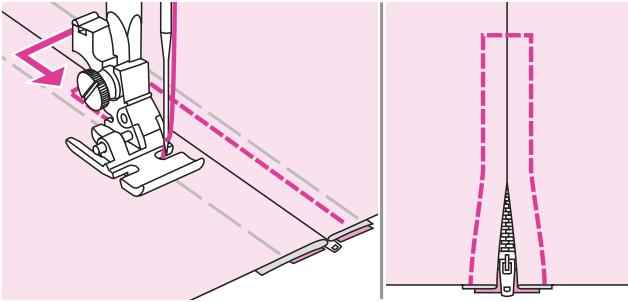
Press open the seam allowance. Place the zipper face down on the seam allowance with the teeth against the seam line. Baste the zipper tape in place.

- ① Wrong side
- ② 2cm
- ③ 5mm
- ④ Basting
- ⑤ Reverse stitches

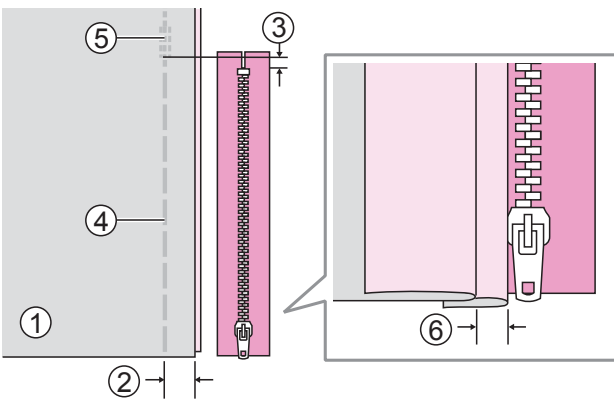


Attach the zipper foot.

- ① Attach the right pin for sewing the left side of the zipper.
- ② Attach the left pin for sewing the right side of the zipper.



Stitching around the zipper. Remove the basting and press.

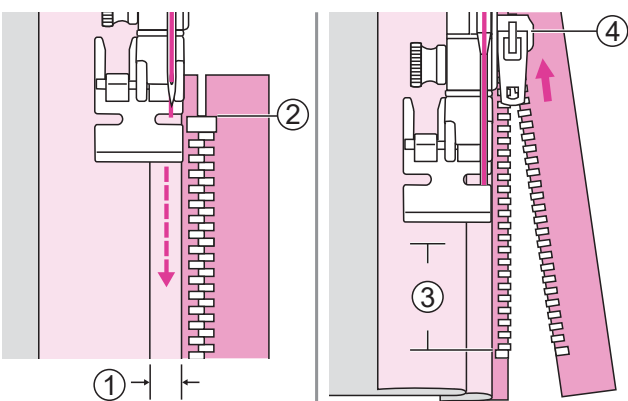


Inserting a side zipper

Place the right sides of the fabric together. Sew a bottom seam 2cm from the right edge of the zipper bottom stop position. Sew few reverse stitches for fixed. Increase the stitch length to maximum, set the tension below 2 and baste the remaining length of the fabric.

Fold back to the left the seam allowance. Turn under the right the seam allowance to form a 3mm fold.

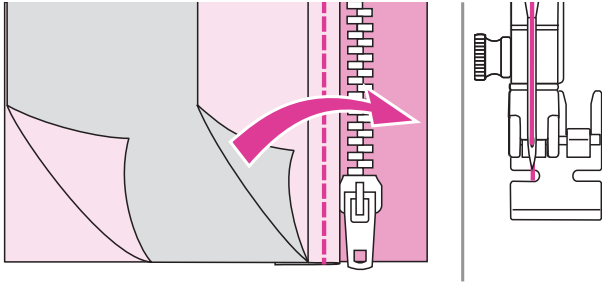
- ① Wrong side
- ② 2cm
- ③ 5mm
- ④ Basting
- ⑤ Reverse stitches
- ⑥ 3mm



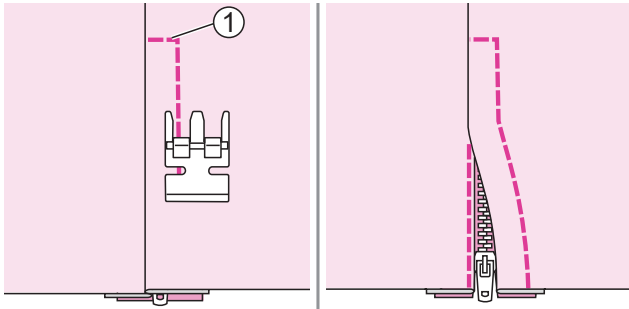
Attach the zipper foot. Attach the right pin for sewing the left side of the zipper. Sew the zipper to the piece of fabric with the extra 3mm, starting from the end of the zipper.

Stop the machine about 5cm from the top of the zipper. Lowered the needle into the fabric, raise the presser foot lifter, and then open the zipper and continue sewing.

- ① 3mm
- ② The end of zipper
- ③ 5cm
- ④ Zipper



Turn the fabric right side out. Attach the left pin for sewing the rightside of the zipper.



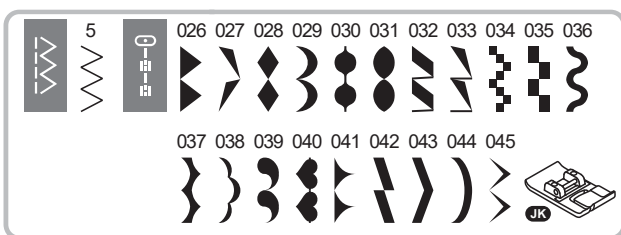
Stitch across the lower end and the right side of the zipper.

① Lower end

Stop the machine about 5cm from the top of the zipper. Remove the basting and open the zipper. Stitch the remaining of the seam.

Satin stitch sewing

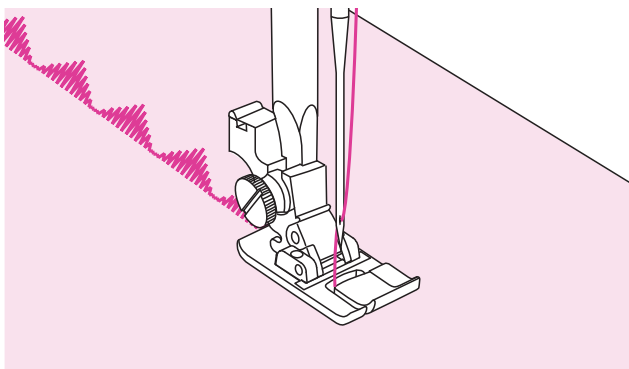
Use the satin stitch foot for satin stitching and sewing decorative stitches.



Using the satin stitch foot.

Note

When sewing very lightweight fabrics, it is recommended that you use interfacing or stabilizer on the wrong side of the fabric.

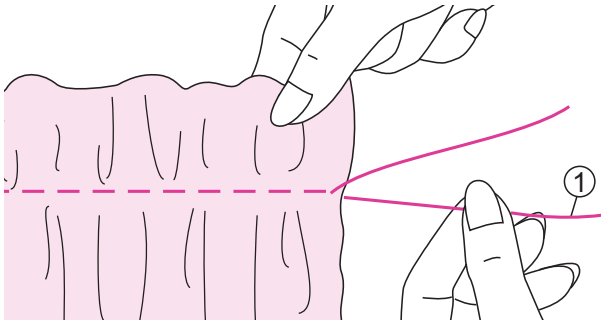
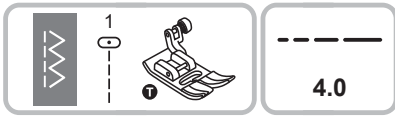


This foot has a groove on the underside which allows dense stitching to pass freely underneath.

To sew the satin or decorative stitch, you may adjust the length and width of the stitch. Experiment with fabric scraps until you get the desired length and width.

Gathering

Ideal for clothing as well as home decor. It works best on thin to medium weight fabrics.



Using the all purpose foot.

Before sewing, please check the upper and bobbin threads are already pulled out about 5cm to leave enough room for sewing. Please refer to "Bringing up the bobbin thread " chapter for more information.

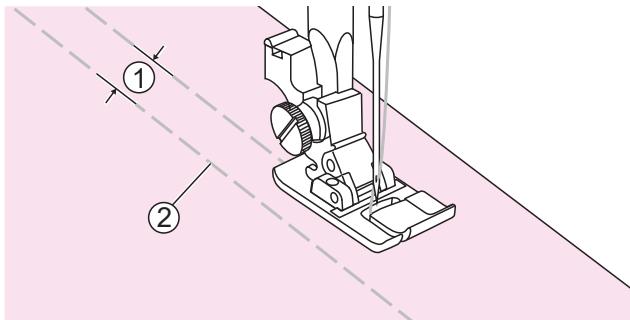
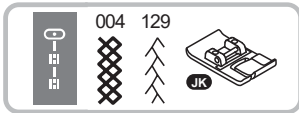
Set the tension below 2. Sew a single row (or many rows) of straight stitches.

Pull the bobbin threads and distribute the gathers evenly. Secure the threads at the other end.

① Bobbin thread

Smocking

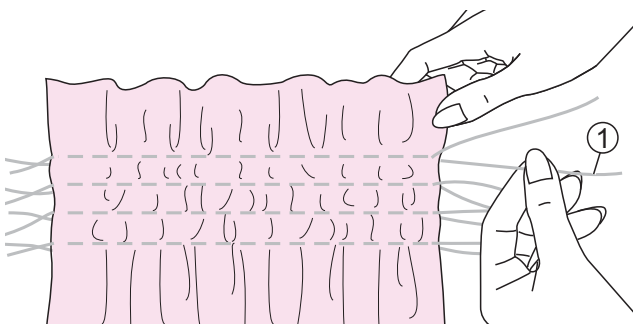
The decorative stitch created by stitching or embroidering over gathers is called "smocking". It is used to decorate the front of blouses or cuffs. The smocking stitch adds texture and elasticity to the fabric.



Using the satin stitch foot.

Increase the stitch length to maximum, set the tension below 2 and basting lines 1cm across the area to be smocked.

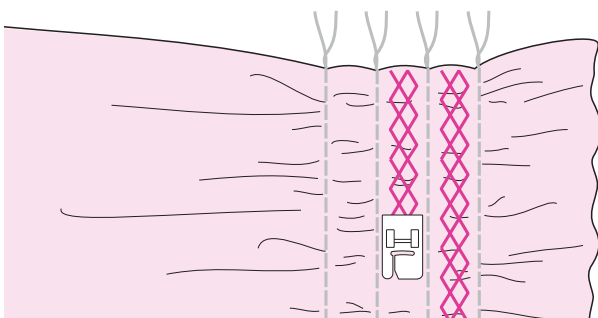
- ① 1cm
- ② Basting



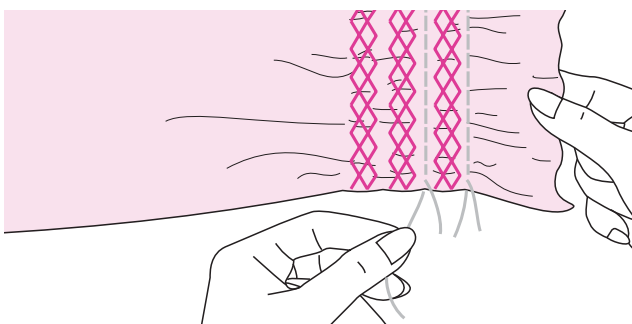
Knot the threads along one edge.

Pull the bobbin threads and distribute the gathers evenly. Secure the threads at the other end.

- ① Bobbin thread

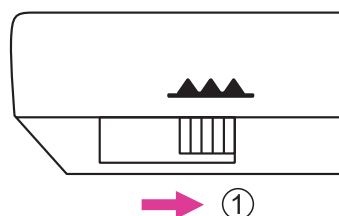
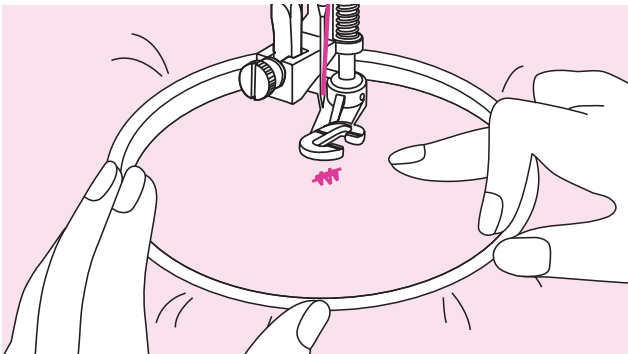
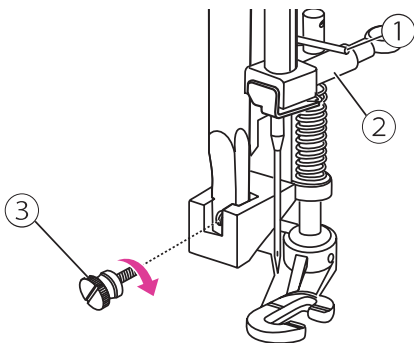
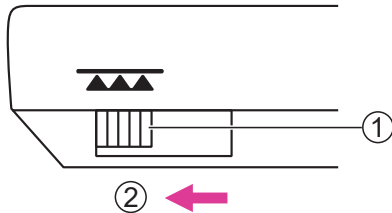
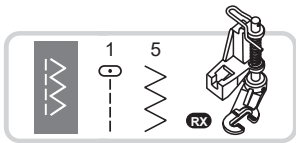


Reduce the tension if necessary and sew decorative stitches between the straight seams.



Pull out the basting.

Free motion darning, embroidery and monogramming



Preparation for embroidering and monogramming

* Embroidery hoop is not included with the machine.

Using the darning/embroidery foot.

Move the drop feed lever to lower the feed dogs.

- ① Drop feed lever
- ② Lowered position

Remove the presser foot holder and attach the darning/embroidery foot. The lever should be behind the needle clamp screw. Press the darning/embroidery foot on firmly from behind with your index finger and tighten the screw.

- ① Lever
- ② Needle clamp screw
- ③ Screw

Draw the desired lettering or design on the surface of the fabric.

Stretch the fabric between the embroidery hoop as firmly as possible.

Place the fabric under the needle. Make sure the presser foot bar is down to its lowest position.

Turn the handwheel towards you to bring up the bobbin thread through the fabric. Sew a few securing stitches at the starting point.

Hold the hoop with thumb and forefinger of both hands while pressing the material with the middle and third finger and supporting the outside of the hoop with your small finger.

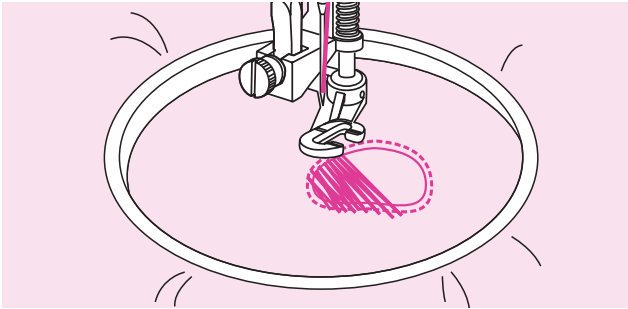
⚠ Attention

Keep fingers away from moving parts, especially needles.

Note

When you finish the work, move the drop feed lever to raise the feed dogs.

- ① Raised position



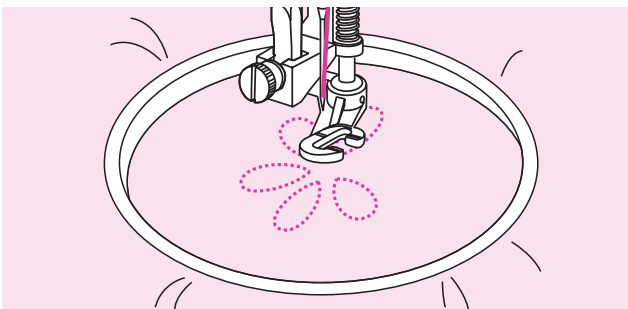
Darning

First sew around the edges of the hole to secure the threads. Working from left to right, sew over the hole in a constant and continuous movement.

Turn the work by 1/4 and sew over the first stitching moving the work slower over the hole to separate the threads and not form big gaps between the threads.

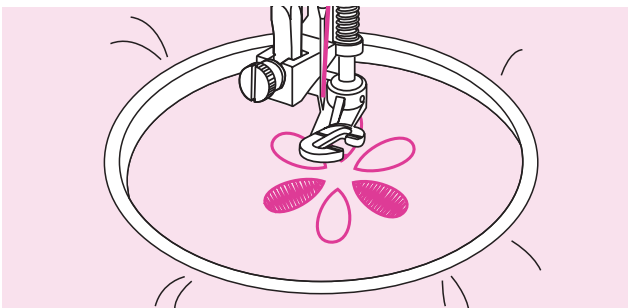
Note

Free motion darning is accomplished without the sewing machine internal feed system. Movement of the fabric is controlled by the operator. It is necessary to coordinate sewing speed and movement of fabric.



Embroidery

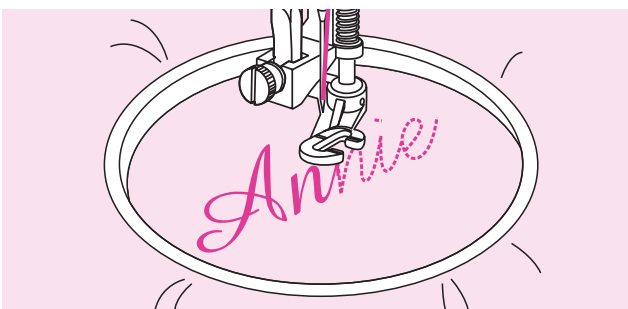
Stitch along the outline of the design by moving the embroidery hoop. When sewing, make sure to maintain a constant speed.



Fill in the design working from the outline towards the inside. Keep the stitches close together.

You will get longer stitches by moving the hoop faster and shorter stitches by moving the hoop slower.

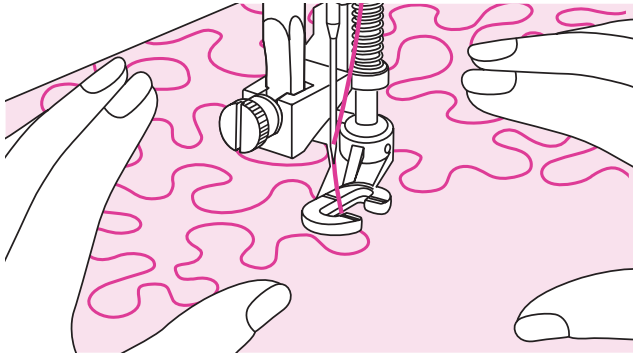
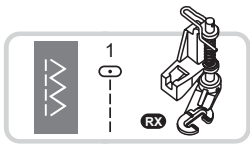
Secure with reinforcement stitches at the end of the design.



Monogramming

Sew at constant speed, moving the embroidery hoop slowly along the lettering.

When the letter is finished, secure with reinforcement stitches at the end of the design.



Using the darning/embroidery foot.

Free motion

Adjust the upper thread tension and the balance to the sewing project if necessary.

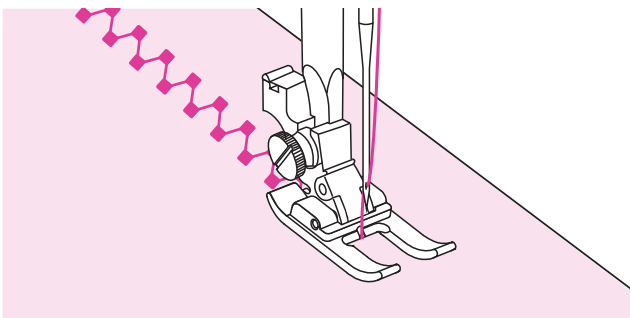
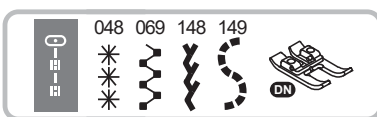
Slowly press down the foot control or press the start/stop button to start sewing.

Hold both hands close to the presser foot like an embroidery hoop to guide the fabric.

If the thread is lying on top of the fabric, slow down the movement. If there are knots on the wrong side of the fabric, move the fabric more quickly.

Open toe foot

This foot makes quick work of appliqués and embroidery projects, as well as the sewing over of lines and patterns. The open shape ensures a clear view of the seam, and is therefore ideal for sewing on tapes and ribbon.

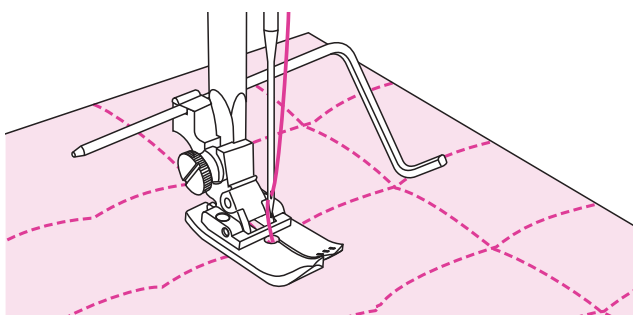
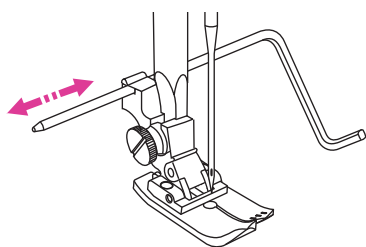
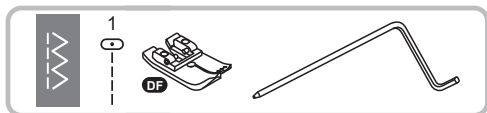


Using the Open toe foot.

Set the machine to the desired decorative stitch and begin to sew.

Quilting

Sandwich batting between the top and bottom layers of fabric is call "Quilting". The top layer is usually formed by multiple geometrically shaped pieces of materials joined together.



Using the Straight stitch foot with edge/quilting guide.

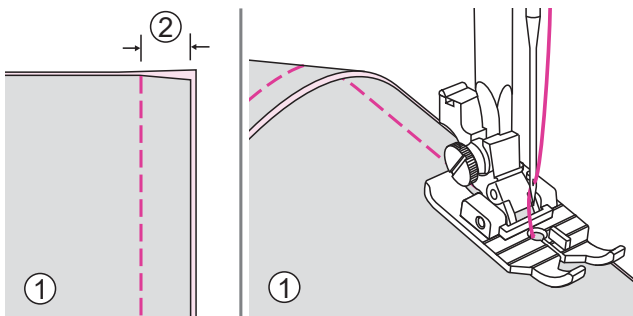
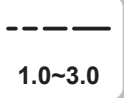
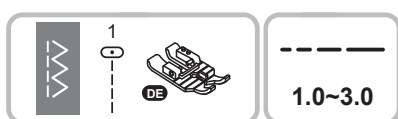
⚠ Attention

Only center straight stitches are applicable while using straight stitch foot.

Using the edge/quilting guide

Attach the edge/quilting guide in the presser foot holder as illustrated and set the space as you desire.

Sew the first row and move over the fabric to sew successive rows with the guide riding along the previous row of stitching.



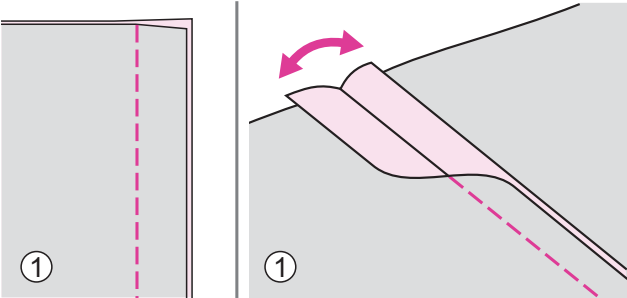
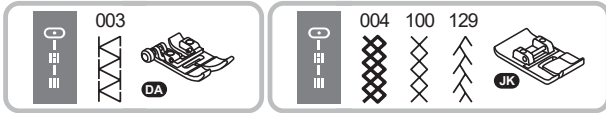
Using the 1/4" quilting foot.

Joining the pieces of the fabric

Use the right edge of the presser foot as a guide for a 1/4" seam. There are markings on the foot which serve as 1/4" and 1/8" pivot points, both in front and behind the needle.

Place fabric under the 1/4" quilting foot and lower the presser foot lever. Sew while keeping the fabric edge(s) lined up evenly with the right edge of the presser foot. To pivot, when the edge of the fabric reaches the foot's 1/4" turning mark (the first marking toward the front of the foot), leave the needle down in the fabric, pivot the fabric and continue sewing the next 1/4" seam.

- ① Wrong side
- ② 5mm



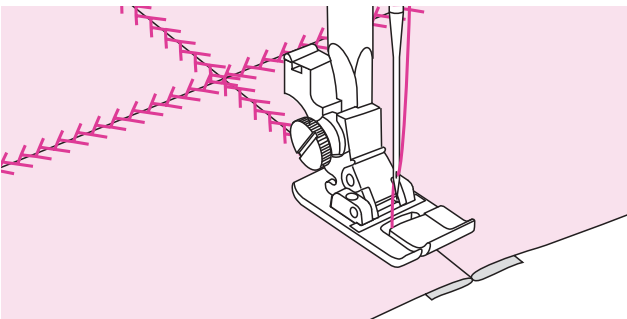
Using the all purpose foot or satin stitch foot.

Patchwork stitching

Place the two fabrics, right sides together and sew using a straight stitch.

Open the seam allowance and press it flat.

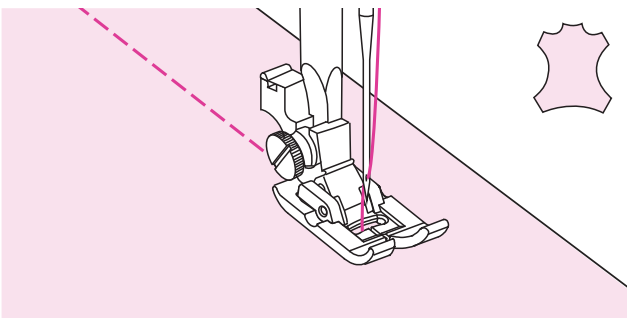
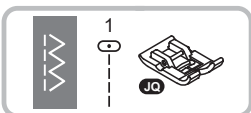
- ① Wrong side



Working on the right side of the fabric, place the center of the presser foot on the seam line of the joined fabrics and stitch over the seam.

Non-stick foot

Due to the special coating on the bottom of this foot, it's perfect for sewing hard-to-feed fabrics, like leather, foam, plastic, imitation leathers and plastic-coated fabrics, such as leather or vinyl.



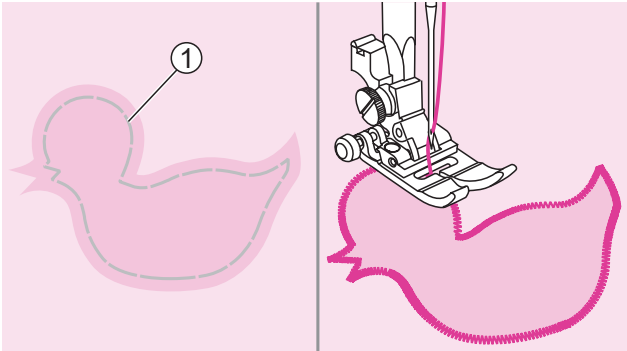
Using the non-stick foot.

Select desired stitch.

Sew slowly and guide the layers.

Applique

You can create and applique by cutting a different piece of fabric into a shape and using it as a decoration.



Using the all purpose foot.

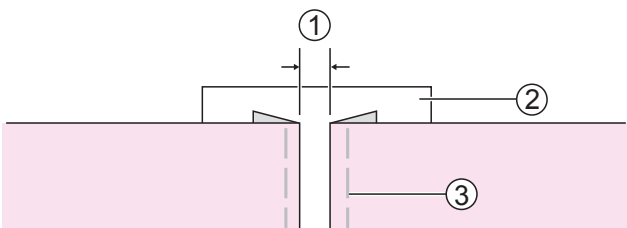
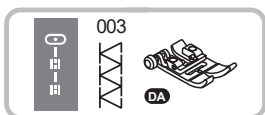
Cut out the applique design and baste it on the fabric. Sew slowly around the edge of the design.

① Basting

Trim the excess material outside the stitching. Make sure not to cut any stitches. Remove the basting.

Fagoting

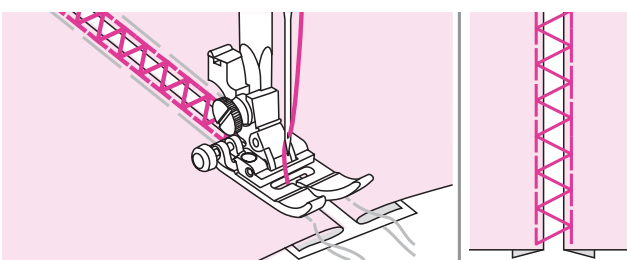
Stitching across an open seam is called "fagoting". It is used on blouses and children's clothing. This stitch is more decorative when thicker thread is used.



Using the all purpose foot.

Separate the folded edges of the fabric pieces with a gap of 4mm and baste them onto a piece of thin paper or water-soluble stabilizer sheet.

- ① 4mm
- ② Thin paper or water-soluble stabilizer
- ③ Basting

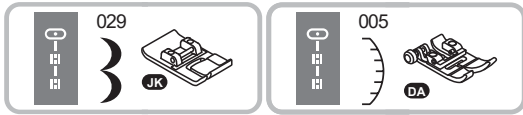


Align the center of the presser foot with the center of the two pieces of fabric and begin sewing.

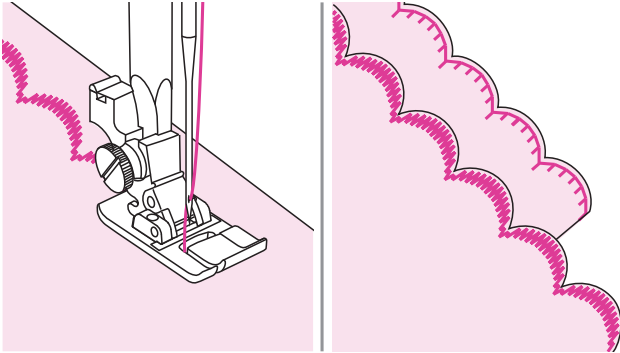
After sewing, remove the stabilizer and basting.

Scallop stitch

The wave-shaped repeating stitch, that looks like shells, is called "scalloping". It is used to decorate the collar of blouses and the edges of knitting projects.



Using the satin stitch foot or all purpose foot.

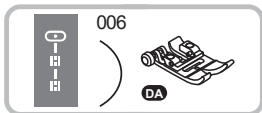


Scallop edging

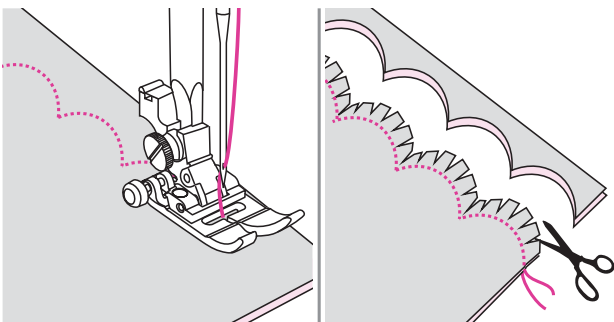
Stitch along the edge of the fabric, making sure not to sew directly on the edge of the fabric.

For better results, apply spray starch onto the fabric and press with a hot iron before it is sewn.

Trim the fabric close to the stitching taking care not to cut the stitches.



Using the all purpose foot.

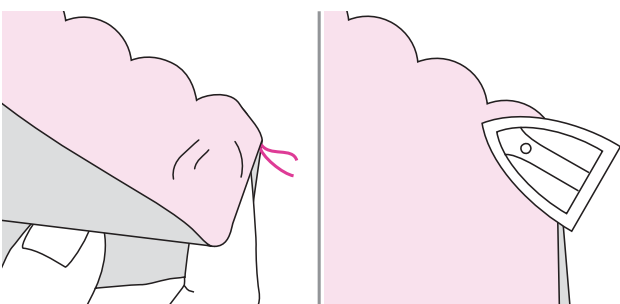


Scalloped hem

Fold the fabric right side together. Sew along the folded edge as illustrated.

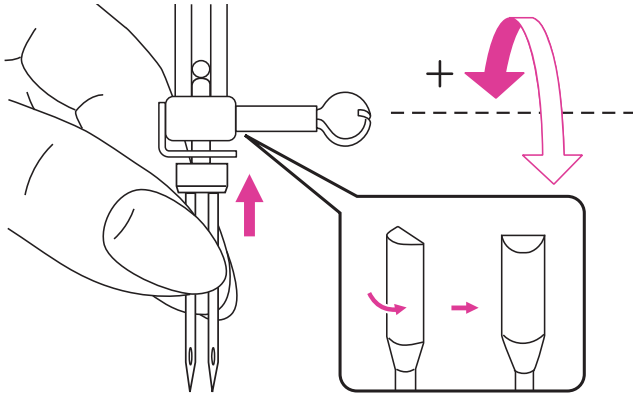
Cut the fabric along the seam leaving an allowance of 3mm for seaming.

Notch the allowance.



Turn the fabric over and push out the curved seam to the surface and iron it.

Twin needle



When using twin needles, be sure to attach the suggested presser foot which screen appears.

Insert the twin needle. Please refer to "Replacing the needle" chapter for more information.



Set the second spool pin into the hole on the top of the machine and put spool pin felt and thread onto second spool holder.

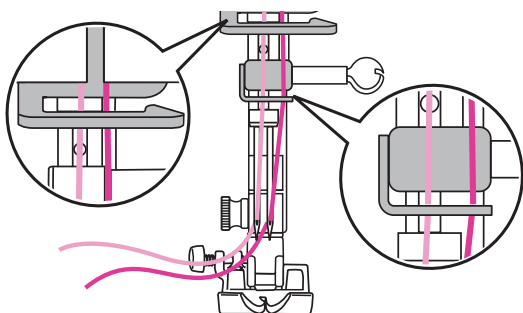
Threading twin needle is the same instruction as single needle. Please refer to "Threading the upper thread" chapter for more information.



△ Attention

The thread from horizontal spool holder must through from left side of the guide plate and the second spool holder thread pass through from right side of the guide plate.

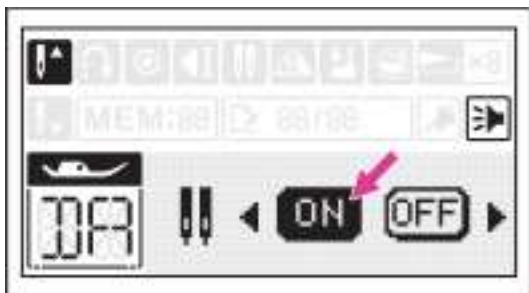
① Twin needle thread guide plate



As shown in the picture, pull the thread from the horizontal spool holder pass through left needle hole manually and thread from the second spool holder pass through right needle hole.

Note

- Twin needle can not use automatic needle threader.
- Make sure that the two threads used to thread the twin needle are of the same weight. You can use one or two colors.



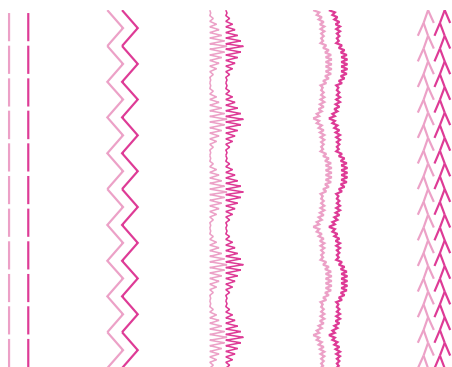
Twin needle setting

Enter the twin needle setting page, turn on the twin needle function. **Please refer to "Settings" chapter for more information.**

The machine automatically reduces the maximum width for the twin needle sewing.

⚠ Attention

- Be sure to set the twin needle mode when using the twin needle. Using the twin needle in the single needle mode may cause the needle to break, resulting in damage.
- If you use the straight needle plate after setting the twin needle, a warning message will pop up in the screen, and the machine will automatically set to the single needle mode, and please replace the single needle, otherwise it will cause the needle to break and cause danger.
- Cannot use or set the twin needle in Combination mode.



Two lines of stitching are sewn parallel to each other.

Note

- When sewing with twin needle, always proceed slowly, and make sure to maintain a low speed to insure quality stitching.
- When twin needle sewing has been selected, it will remain active even the stitch is changed.

⚠ Attention

After finishing sewing, please remember to change from twin needle to single needle and go to setting page to select the single needle mode.



Maintenance and Trouble Shooting

Maintenance

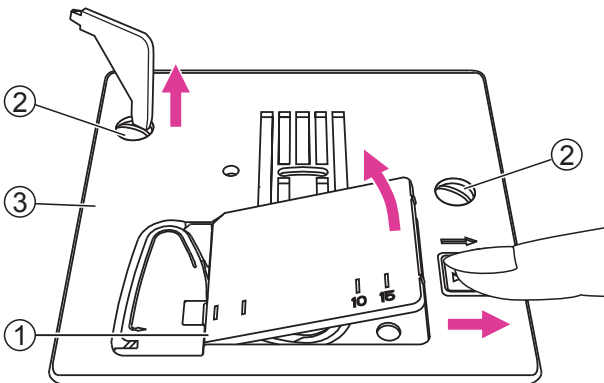
⚠ Attention

Disconnect the power cord from the wall socket before carrying out any maintenance, otherwise injury or electrical shock may result.

Clean the machine surface

If the surface of the sewing machine is dirty, lightly soak a cloth in mild detergent, squeeze it out firmly and then wipe the surface. After cleaning it once in this way, wipe the surface again with a dry cloth.

Do not use any organic solvents or detergents.



Clean the hook

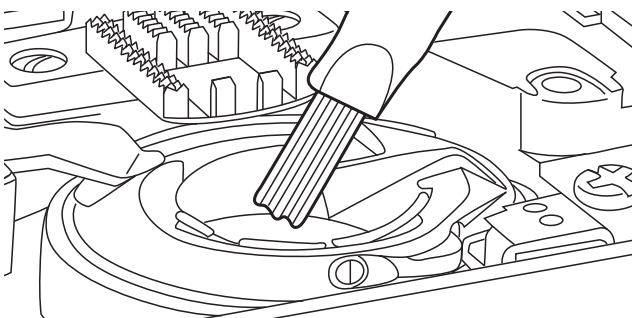
If lint and bits of thread accumulate in the hook, this will interfere with the smooth operation of the machine. Check regularly and clean the stitching mechanism when necessary.

Remove the needle, presser foot and presser foot holder.

Remove the bobbin cover and bobbin.

Remove the screws on the needle plate then remove the needle plate.

- ① Bobbin cover
- ② Screws
- ③ Needle plate



Clean the feed dogs and bobbin case with a brush. And also use a soft and dry cloth to clean them.

Warning Function



Warning beeping sound

- Operate correctly: 1 beep.
- Operate incorrectly: 3-short beeps.
- When the sewing machine is in trouble and can't sew: 1-long beep.

It means that the thread may be twisted or jammed and the handwheel axle can't move. Please look through the "Trouble shooting guide" to find the solution. After the problem has been solved, the machine will be able to sew.

Note

If the problem is still not solved, please contact your local dealer.

⚠ Attention

During sewing, if the thread has been jammed inside the hook and needle movement stops. If you continue to sew, the machine will stop automatically due to safety. If machine stops, please turn off the machine firstly then turn on again.

Trouble shooting guide

Before calling for service, check below trouble shooting guides in advance, if problem still exist, please contact nearest dealer or local service center.

Problem	Cause	Correction
Upper thread breaks	1. The machine is not threaded correctly.	1. Rethread the upper thread.
	2. The thread tension is too tight.	2. Reduce the thread tension (to lower number).
	3. The thread is too thick for the needle.	3. Select a larger needle size.
	4. The needle is not inserted correctly.	4. Remove and reinsert the needle (flat side towards the back).
	5. The thread is wound around the spool holder pin.	5. Remove the reel and wind up the thread onto the reel.
	6. The needle is damaged.	6. Insert a new needle.
Bobbin thread breaks	1. The bobbin case is not inserted correctly.	1. Remove and reinsert the bobbin case and pull on the thread.
	2. The bobbin case is threaded wrong.	2. Check both bobbin and bobbin case if on the correct position.
Skipped stitches	1. The needle is not inserted correctly.	1. Remove and reinsert the needle (flat side towards the back).
	2. The needle is damaged.	2. Insert a new needle.
	3. The wrong size needle has been used.	3. Choose a needle to suit the thread.
	4. The presser foot is not attached correctly.	4. Check and attach it correctly.
	5. The machine is not threaded correctly.	5. Rethread the upper thread.
Needle breaks	1. The needle is damaged.	1. Insert a new needle.
	2. The needle is not correctly inserted.	2. Insert the needle correctly (flat side towards the back).
	3. Wrong needle size for the fabric.	3. Choose a needle to suit the thread and fabric.
	4. The wrong presser foot is attached.	4. Select the correct presser foot.
	5. The needle clamp screw is loose.	5. Use the screwdriver to tighten the screw.
	6. The presser foot is not appropriate for the type of stitch that you sew.	6. Attach appropriate presser foot for the type of stitch that you sew.
	7. The upper thread tension too tight.	7. Loosen the upper thread tension.

Problem	Cause	Correction
Loose stitches	1. The machine is not correctly threaded.	1. Check the threading and rethread.
	2. The bobbin case is not threaded correctly.	2. Thread the bobbin case as illustrated.
	3. Needle/fabric/thread combination is wrong.	3. The needle size must suit the fabric and thread.
	4. The thread tension is wrong.	4. Correct the thread tension.
Seam gather or pucker	1. The needle is too thick for the fabric.	1. Select a correct needle size.
	2. The stitch length is wrong.	2. Adjust the stitch length.
	3. The thread tension is too tight.	3. Loosen the thread tension.
Seam puckering	1. The needle thread tension is too tight.	1. Loosen the thread tension.
	2. The needle thread is not threaded correctly.	2. Rethread the machine.
	3. The needle is too heavy for the fabric being sewn.	3. Choose a needle to suit the thread and fabric.
	4. The stitch length is too long for the fabric.	4. Adjust the stitch length shorter.
	5. Sewing on thin fabric.	5. Sew with a stabilizer material under the fabric.
Patterns are distorted	1. The presser foot is not suited for the pattern.	1. Select the correct foot.
	2. The needle thread tension is too tight.	2. Loosen the thread tension.
Thread has jammed	1. Thread is caught in the hook.	Remove the upper thread and bobbin case, turn the handwheel backwards and forwards and remove the thread remnants.
	2. The feed dogs are packed with lint.	
The machine is noisy	1. Fluff or oil have collected on the hook or needle bar.	1. Clean the hook and feed dog.
	2. The needle is damaged.	2. Insert a new needle.
	3. Thread is caught in the hook.	Remove the upper thread and bobbin case, turn the handwheel backwards and forwards and remove the thread remnants.
	4. The feed dogs are packed with lint.	
Uneven stitches, uneven feed	1. Poor quality thread.	1. Select a better quality thread.
	2. The bobbin case is threaded uncorrect.	2. Remove the bobbin case and the thread and reinsert them correctly.
	3. Fabric has been pulled on.	3. Do not pull on the fabric while sewing, let it be taken up by the machine.

Problem	Cause	Correction
The sewing machine doesn't operate	1. The machine is not turned on.	1. Turn on the machine.
	2. The presser foot lifter is raised.	2. Lower the presser foot lifter.
	3. The machine is not plugged in.	3. Connect the power cord to the electric outlet.



Do not dispose of electrical appliances as unsorted municipal waste, use separate collection facilities.

Contact your local government for information regarding the collection systems available.

If electrical appliances are disposed of in landfills or dumps, hazardous substances can leak into the groundwater and get into the food chain, damaging your health and well-being.

When replacing old appliances with new ones, the retailer is legally obligated to take back your old appliance for disposal at least for free of charge.

